



Master Scale Kit Edition P-51 Mustang 56.3"

Code : MSK01.276

ASSEMBLY MANUAL

“Graphics and specifications may change without notice”.



Specifications:

Wingspan-----	56.3 in-----	143 cm.
Wing area-----	563.6 sq.ins-----	36.4 sq.dm.
Weight-----	6.6 - 6.8 lbs-----	3.0 - 3.10 kg.
Length-----	45.3 in-----	115.1 cm.
Engine/Motor size -----	10cc.	
Radio-----	7 channels with 7 servos.	

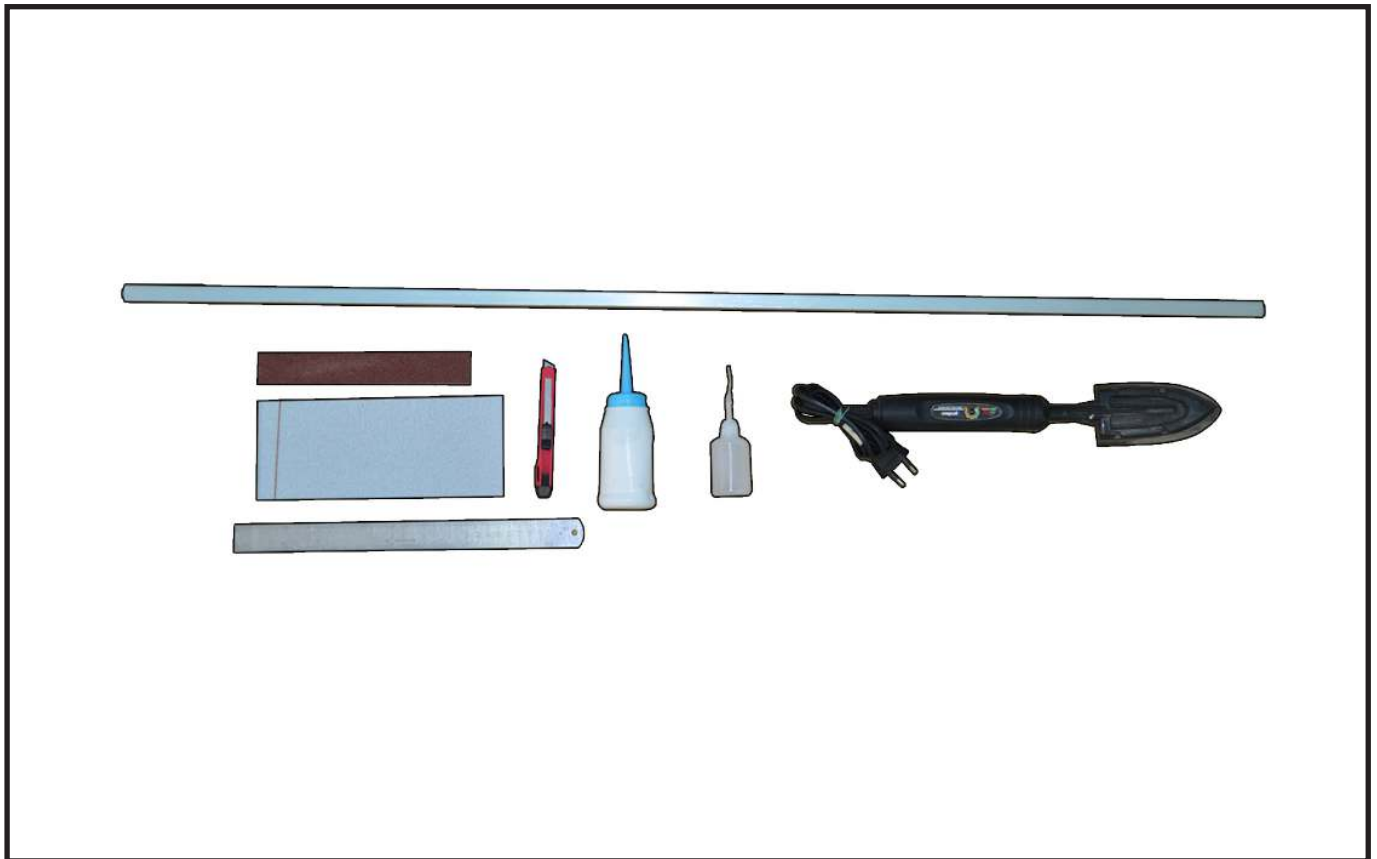
INTRODUCTION

- Congratulations and thank you for purchasing the **Master Scale Kit Edition P-51 Mustang 56.3”** We are pleased to bring you this scale P-51. with this kit you can achieve whatever level of detail you like. Just by following the instruction and finishing the plane in scale-looking trim scheme, beginning scale modelers will end up with a model that very much represents and full-size P-51. Experienced builders will find ways to add even more detail, making the **Master Scale Kit Edition P-51 Mustang 56.3”** competitive in scale contents.

GETTING PREPARE TO BUILD AS

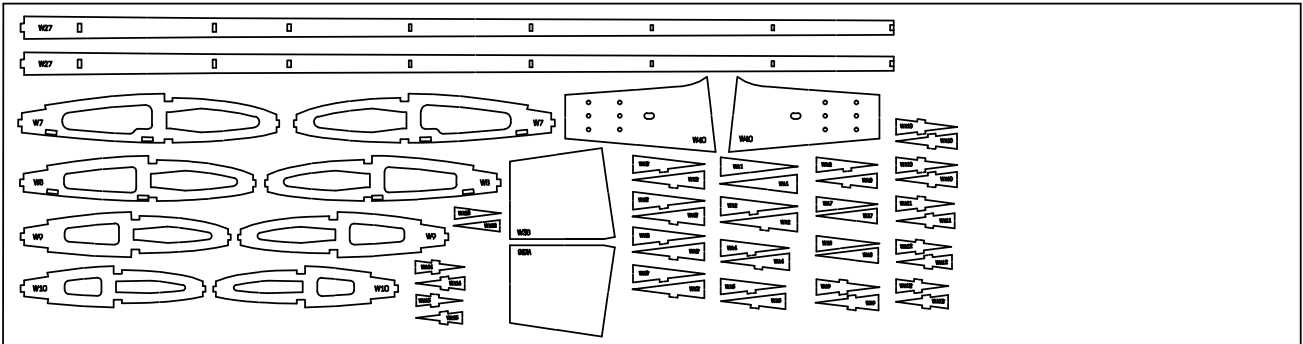
- Here is a list of supplies you should have on hand while you are building. Some of these are optional. Use your own experience to decide what you need.

- Getting prepare to build as:
- Flat Iron
- White Glue
- CA Glue
- Epoxy Glue
- Ruler
- Cutter
- Sandpaper Bar
- Aluminum Square Fixed Tool

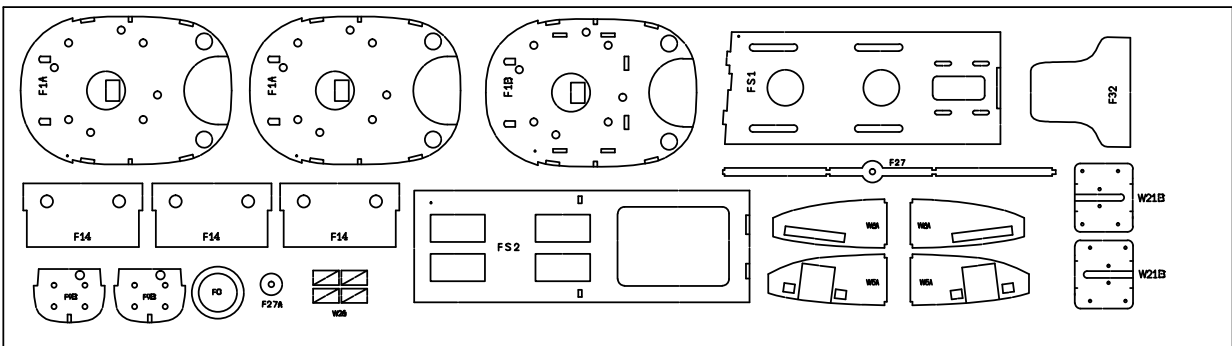


DIE-CUT PATTERNS

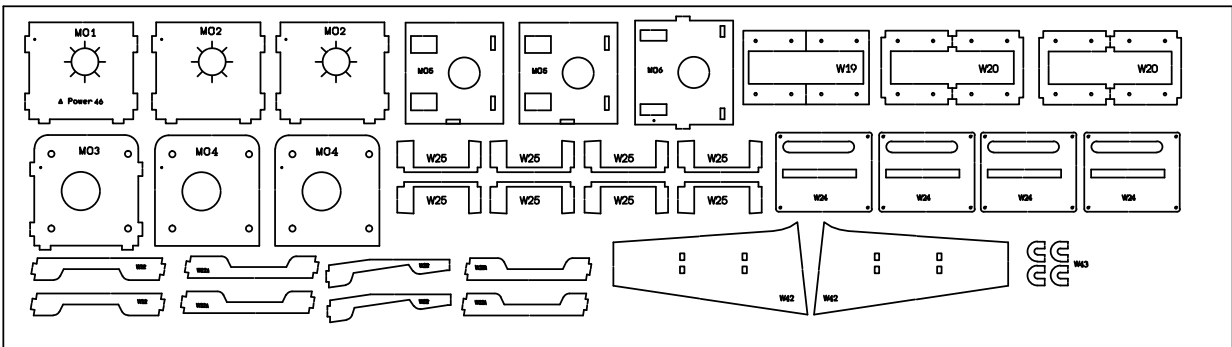
2mm balsa plywood 950mmx250mm (1 per kit)



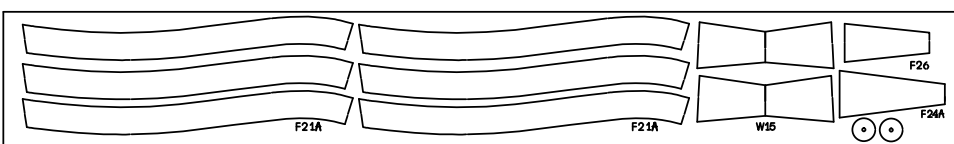
3mm plywood 900mmx250mm (1 per kit)



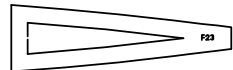
3mm plywood 900mmx250mm (1 per kit)



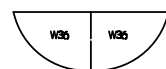
8mm balsa 700mmx100mm (1 per kit)



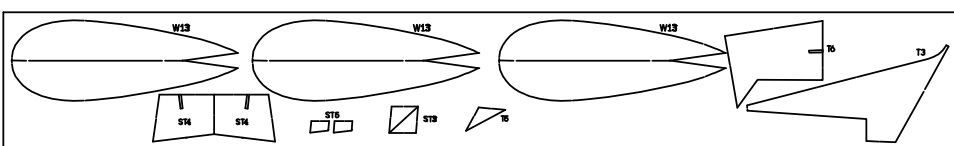
4mm balsa (1 per kit)



10mm balsa (1 per kit)



8mm balsa 700mmx100mm (1 per kit)



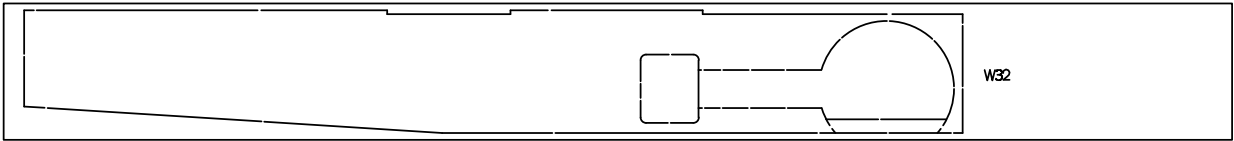
2mm phip (1 per kit)

DIE-CUT PATTERNS

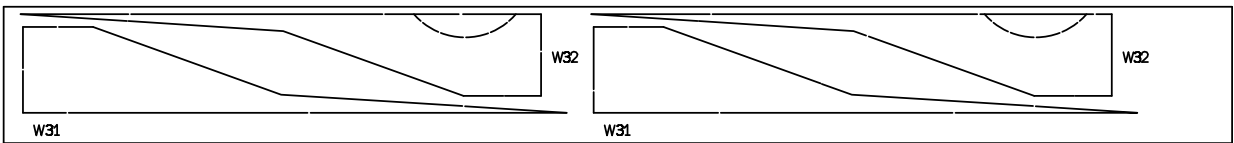
2mm balsa sheet 900mx100mmm (2 per kit)



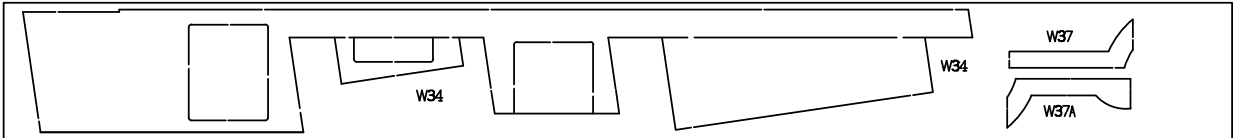
2mm balsa sheet 900mx100mmm (2 per kit)



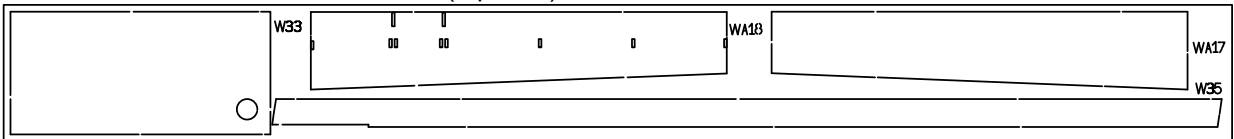
2mm balsa sheet 900mx100mmm (1 per kit)



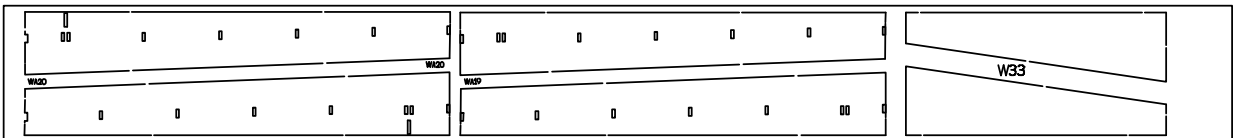
2mm balsa sheet 900mx100mmm (2 per kit)



2mm balsa sheet 900mx100mmm (2 per kit)

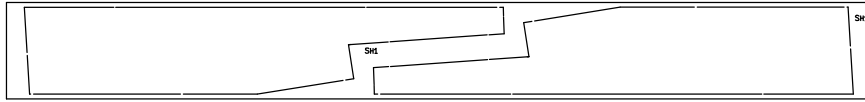


2mm balsa sheet 900mx100mmm (1 per kit)

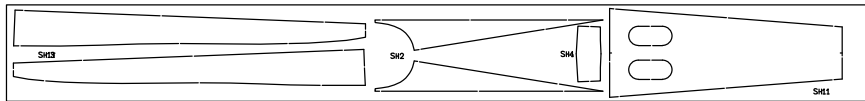


DIE-CUT PATTERNS

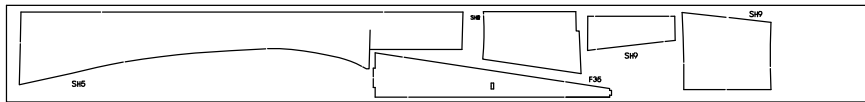
2mm balsa sheet 900mx100mmm (1 per kit)



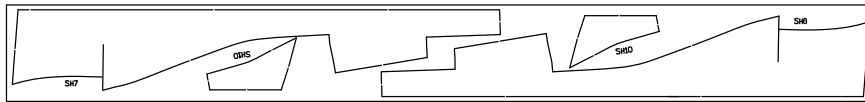
2mm balsa sheet 900mx100mmm (1 per kit)



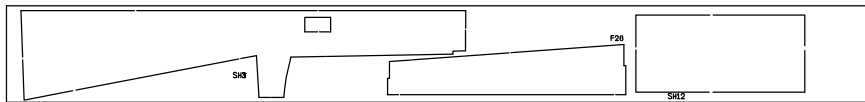
2mm balsa sheet 900mx100mmm (2 per kit)



2mm balsa sheet 900mx100mmm (1 per kit)



2mm balsa sheet 900mx100mmm (2 per kit)



PREPARE BEFORE BUILDING

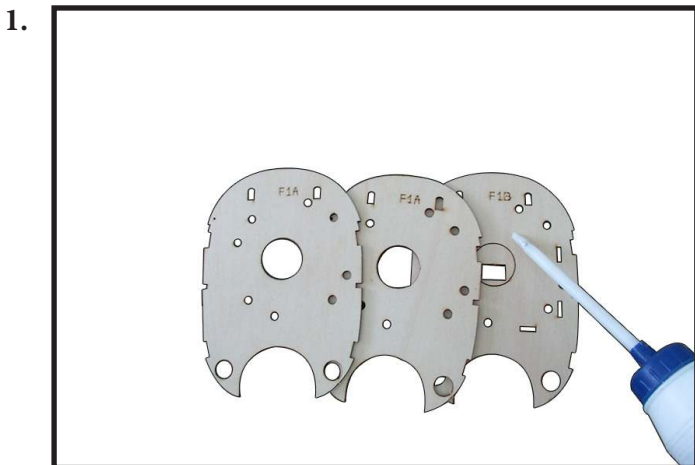
Please kindly see the plan drawing and compare to die-cut pattern to pick the parts of fuselage, the parts of wing, the parts of rudder and stabilizer. They were shown by the difference name code. Please lightly remove the die-cut parts by paper cutter blade. Please make lightly clean smoke stains on them by a sanding tool so that the glue absorbs quickly.

THE FUSELAGE

As if you were sitting in the cockpit and distinguish left side and right side of model . **NOTE: Regulations for the right side. It is small point which was marked on each former and fuselage side.**

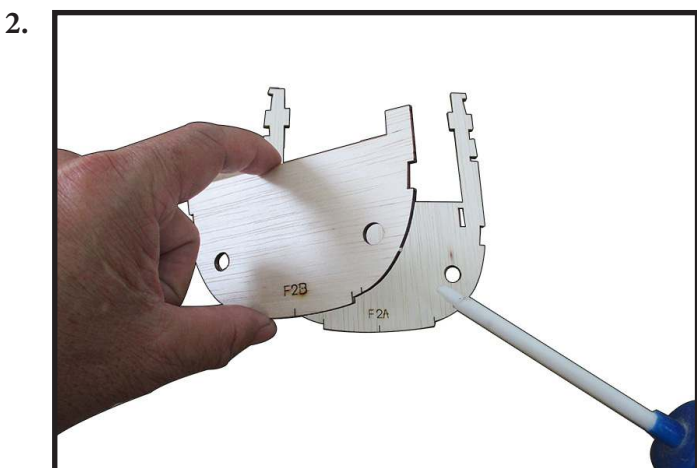
* Firewall

Locate and assemble 3 layers of engine mount include F1A (2pcs) and F1B (1pcs) by epoxy as photo shown (photo 1). **NOTE: The small point is regulations for the right side.** And then, use heavy flat thing pressed on F1 block (3 layers assembled) until epoxy dries to ensure firewall block is not warped.

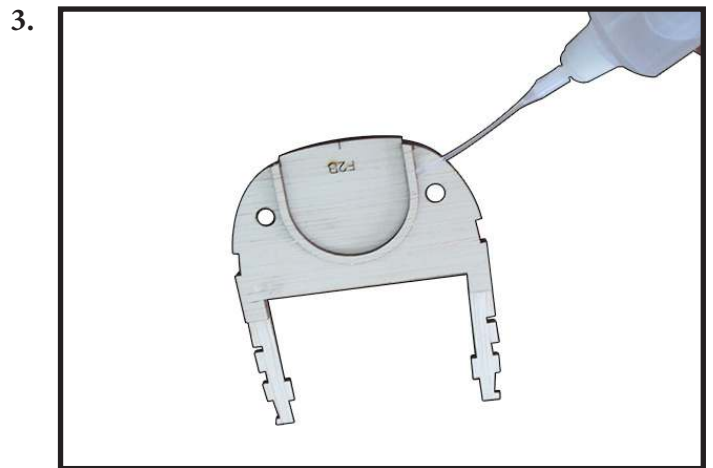


* Position hole of pin for wing on fuselage at front.

Locate and assemble 2 layers F2A and F2B by epoxy as photo shown (photo 2).

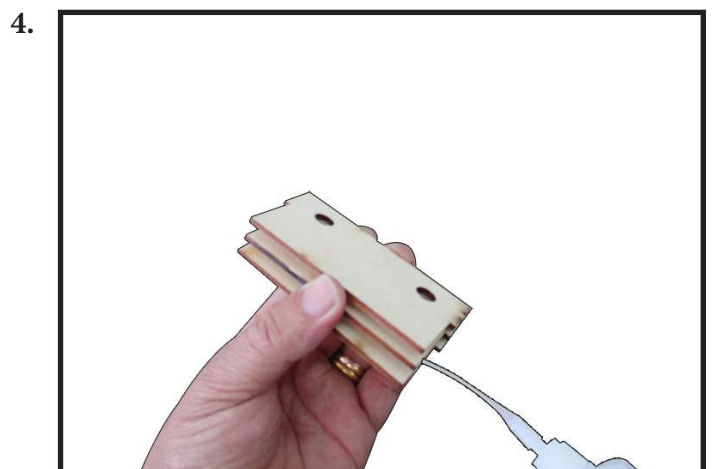


As photo shown (photo 3), you can use 100% epoxy glue. And then, use heavy flat thing pressed on F2 block until the glue dries. Or you can use CA glue at some places to help holding them temporarily. At this time, you can do next step to save more time while waiting epoxy dries.



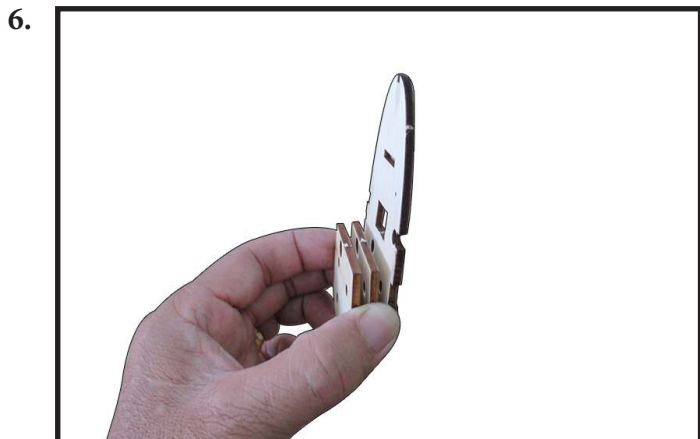
* The wing mount on fuselage at rear.

Locate and assemble 3 layers F14 by epoxy as photo shown (photo 4 and photo 5).



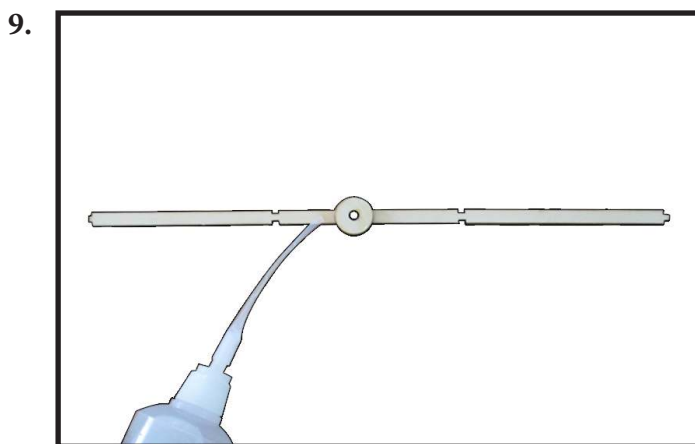
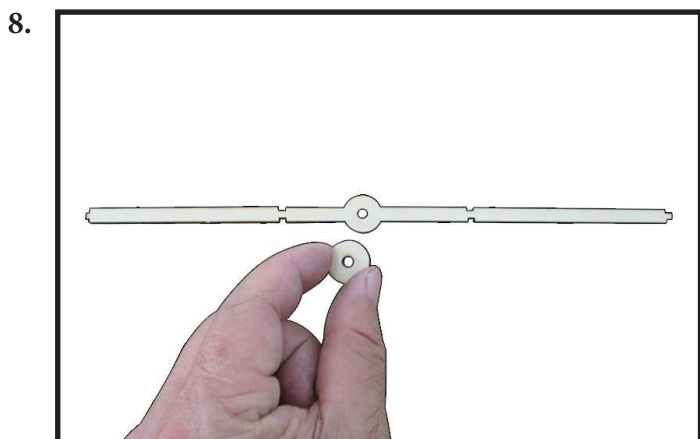
*** Tail gear mount.**

Locate and assemble 3 layers of tail gear mount include F9B (2pcs) and F1A (1pcs) by epoxy as photo shown (photo 6 and photo 7). **NOTE: The small point is regulations for the right side.**



*** Antenna mount.**

Locate and assemble F27A and F27B by epoxy as photo shown (photo 8 and photo 9).



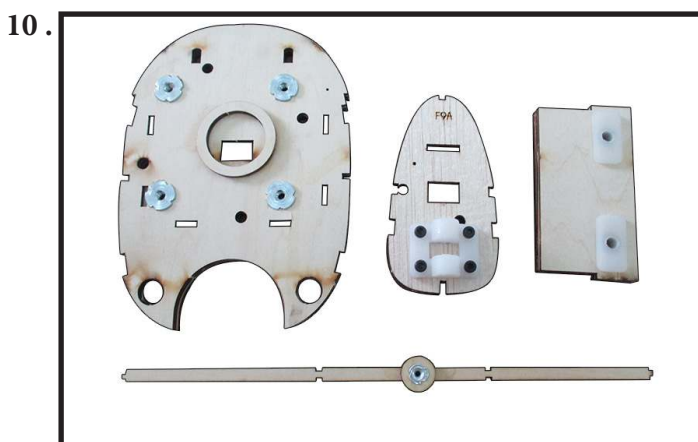
*** Assemble hard- wear to the position of holes were drilled available on Firewall, Tail gear mount, Wing mount , Antenna mount.**

Locate and assemble Pronged T-Nuts M4 to engine holes of F1 (firewall) as photo shown (photo 10). Please choose the fit engine. Depending on the engine's exhaust pipe, you can rotate the engine horizontally or vertically.

Locate and assemble Pronged T-Nuts M3 to F9 (tail gear mount). The next assembly is Plastic Gear Mount and Bolt as photo shown (photo 10).

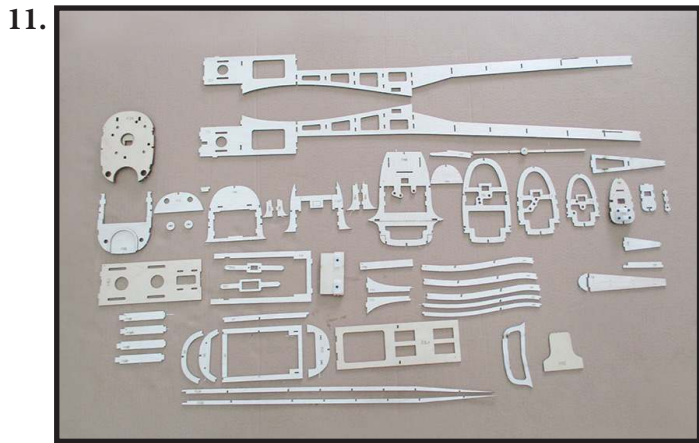
Locate and assemble Plastic Nut M6 to F14 (the wing mount) by CA glue as photo shown (photo 10).

Locate and assemble Pronged T-Nuts M3 to F27 (antenna mount) as photo shown (photo 10). The Antenna is removable at here.



*** All parts of fuselage.**

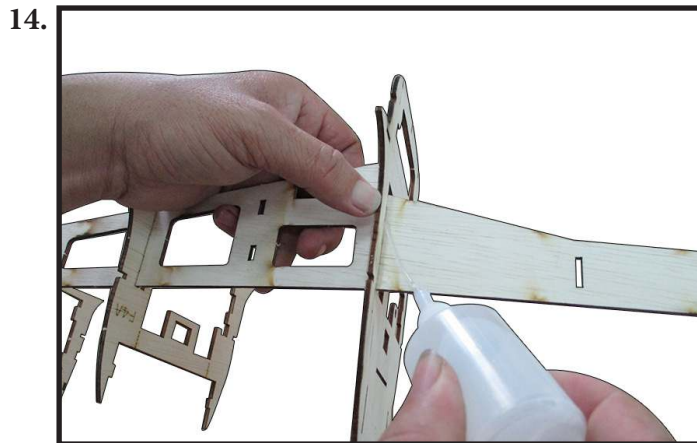
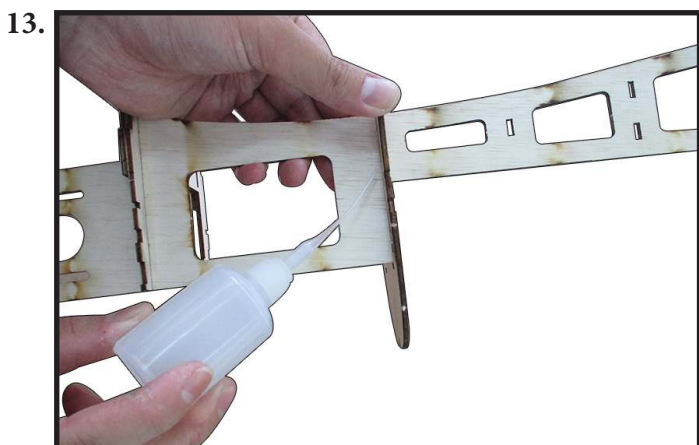
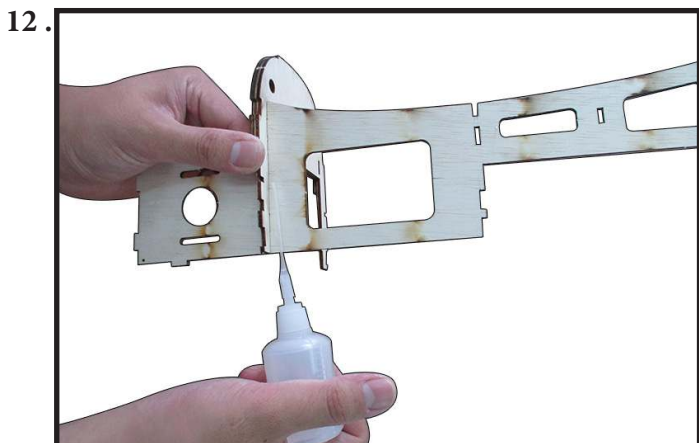
As shown (photo 11). All parts are available for fuselage assembly.



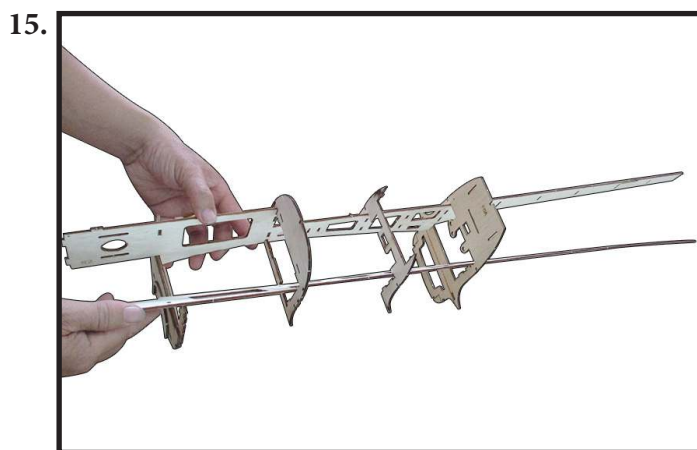
*** Build the fuselage.**

Arrange the left fuselage side S1, and the right fuselage side S2. **NOTE: The small point is regulations for the right side.**

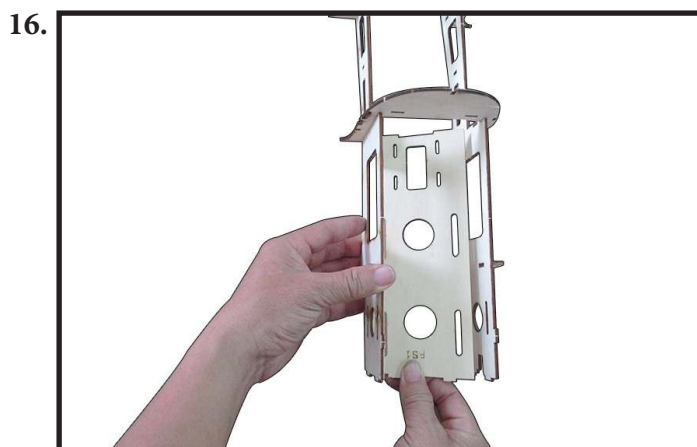
Locate and assemble F2 block, F3A, F4A, F5A to right fuselage side S2 by CA glue as photo shown (photo 12,13,14). **NOTE: The small point is regulations for the right side.**

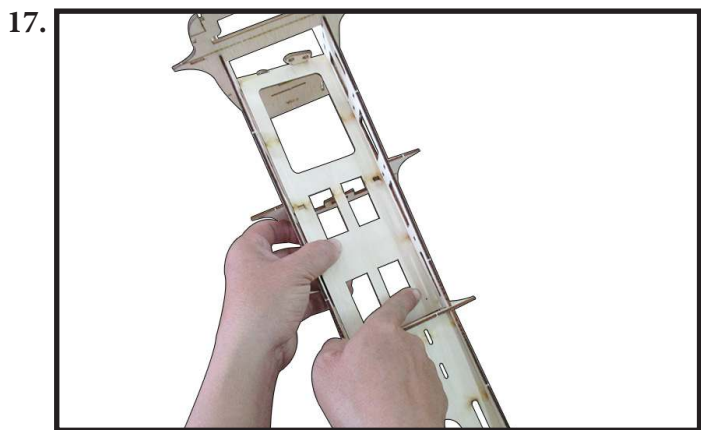


Locate and assemble left fuselage side S1 to F2 block, F3A, F4A, F5A by CA glue as photo shown (photo 15).

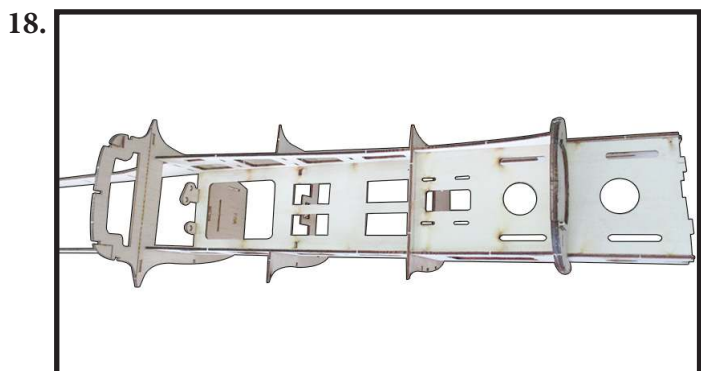
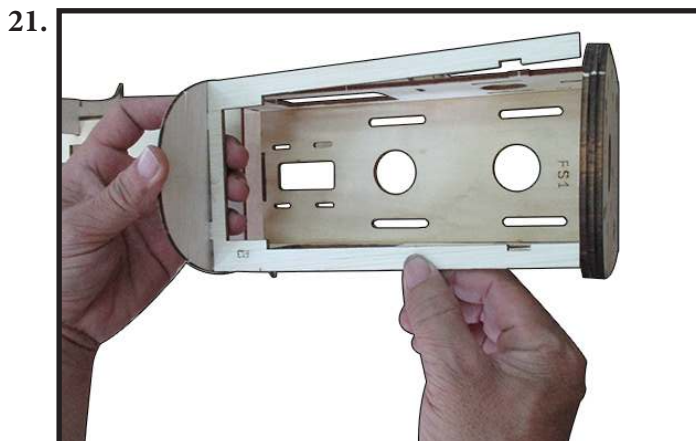


Locate and assemble FS1 to FS2 to fuselage by CA glue as photo shown (photo 16,17,18). **NOTE: The small point is regulations for the right side.**

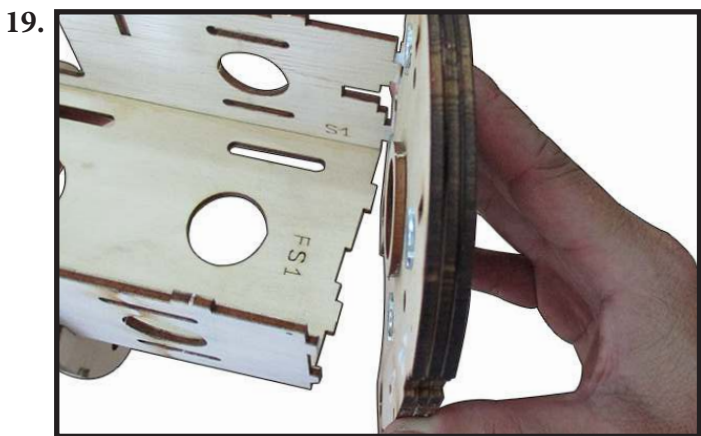
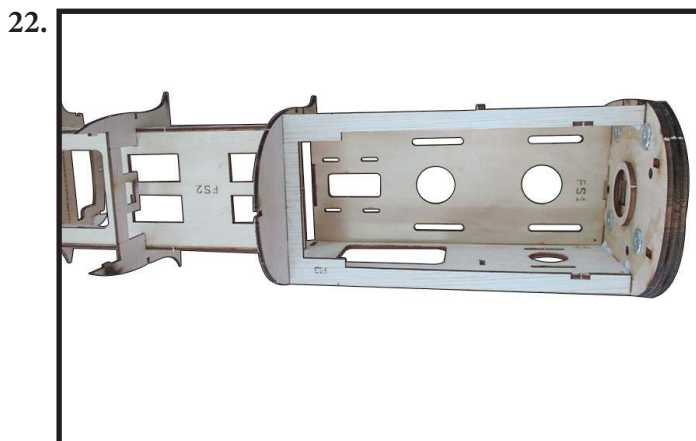




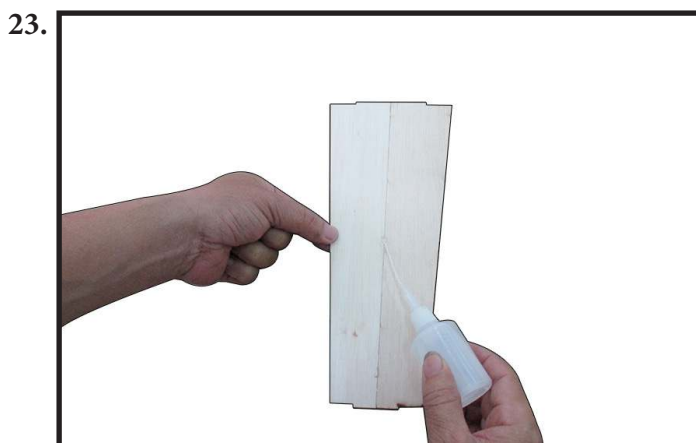
Locate and assemble F13 to fuselage by CA glue as photo shown (photo 21,22).



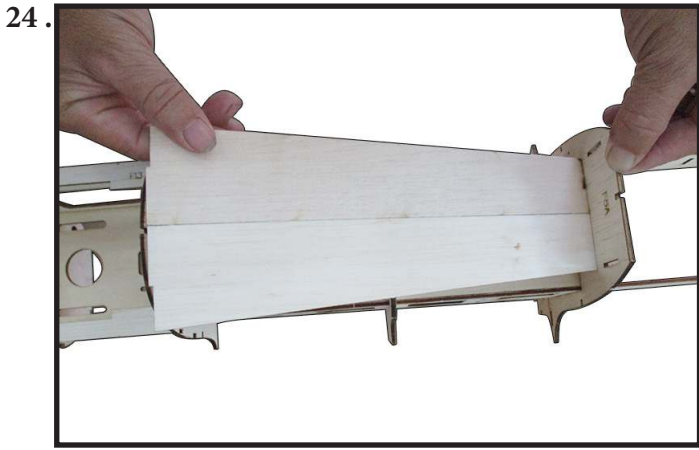
Locate and assemble F1 (firewall) to fuselage by CA glue as photo shown (photo 19,20). **NOTE: The small point is regulations for the right side.**



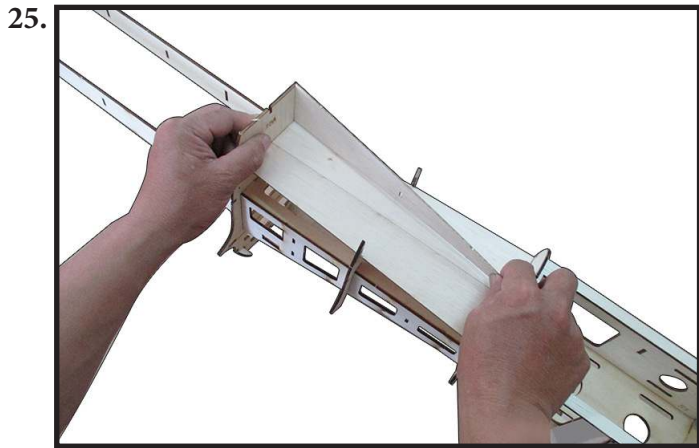
Weld together two pieces F28 by CA glue as photo shown (photo 23).



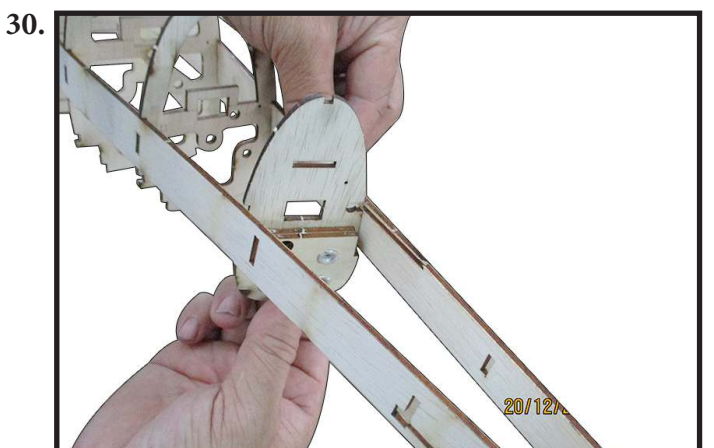
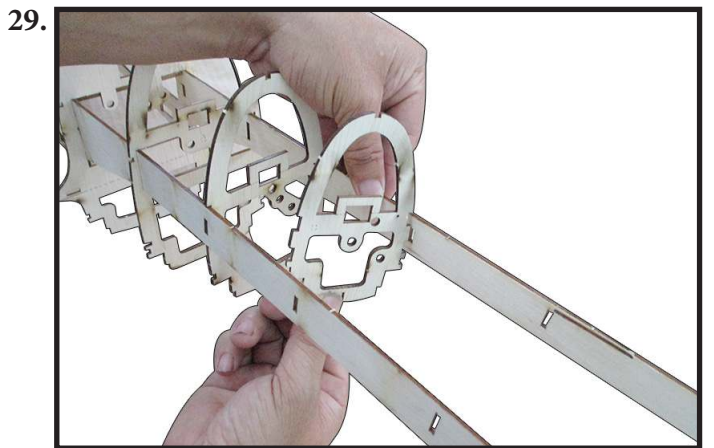
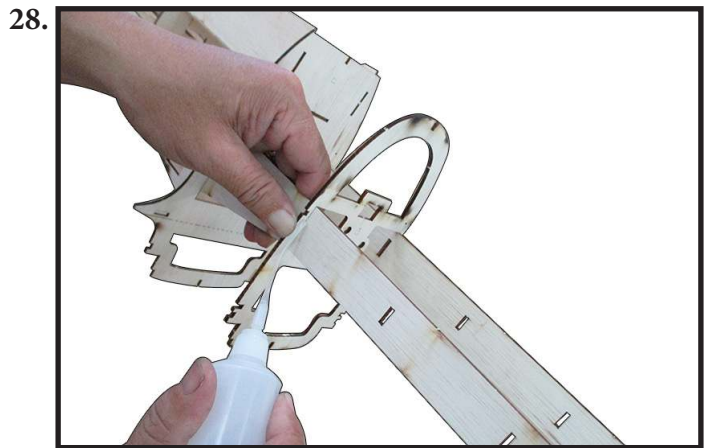
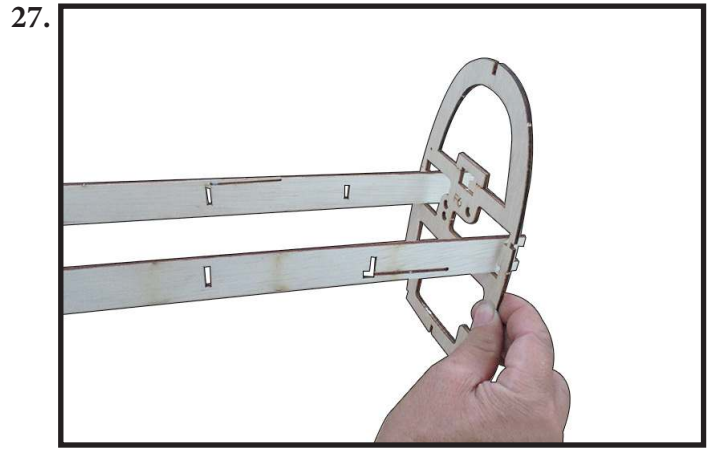
Locate (cockpit's area) and assemble F28 to fuselage by CA glue as photo shown (photo 24).

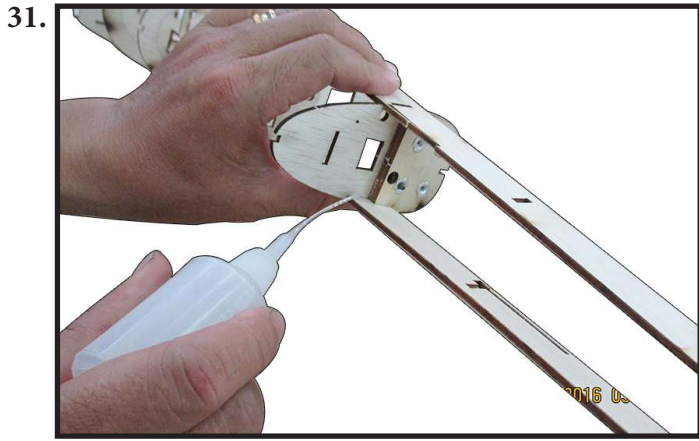


Locate and assemble F35 to two sides of cockpit's area by CA glue as photo shown (photo 25,26).

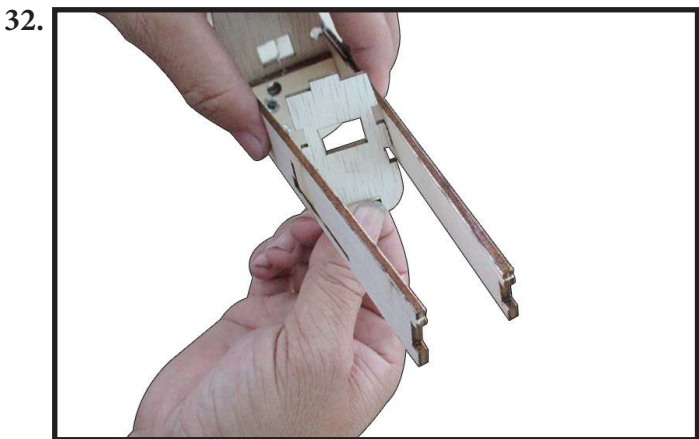


Step by step, locate and assemble F6 to F11 to fuselage by CA glue as photo shown (photo 27,28,29,30,31,32,33). **NOTE: The small point is regulations for the right side.**

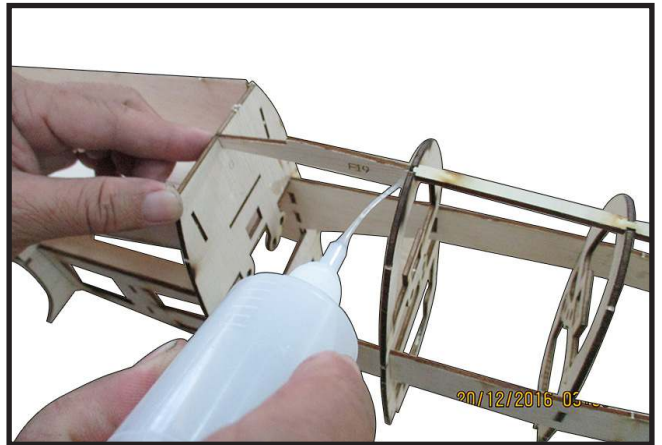
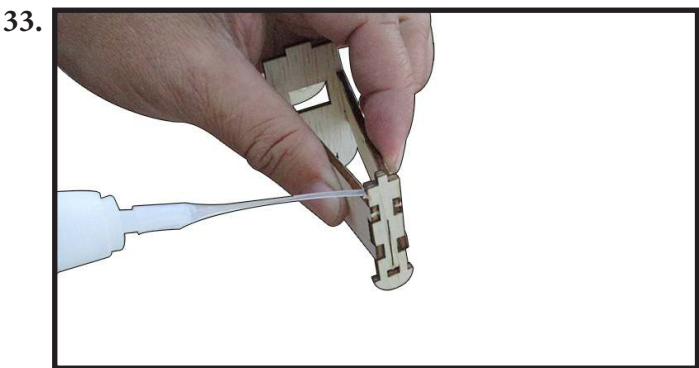




Locate and assemble F27 (Antenna mount) to fuselage by CA glue as photo shown (photo 35).

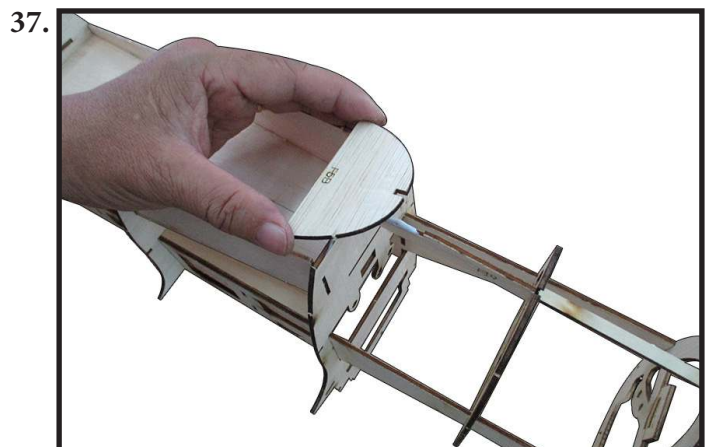


Locate and assemble F19 to fuselage by CA glue as photo shown (photo 36).

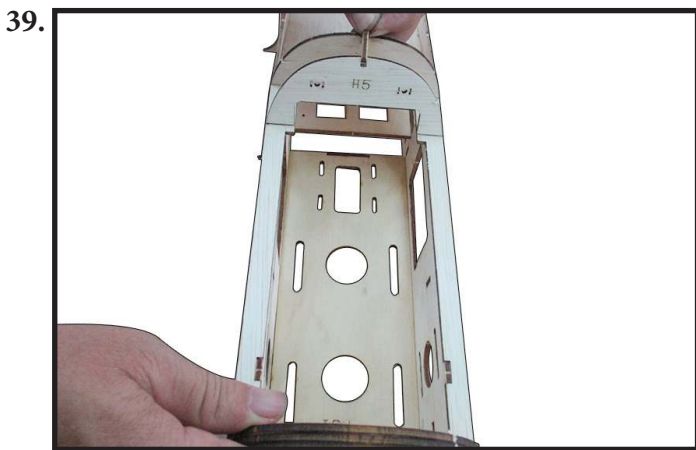
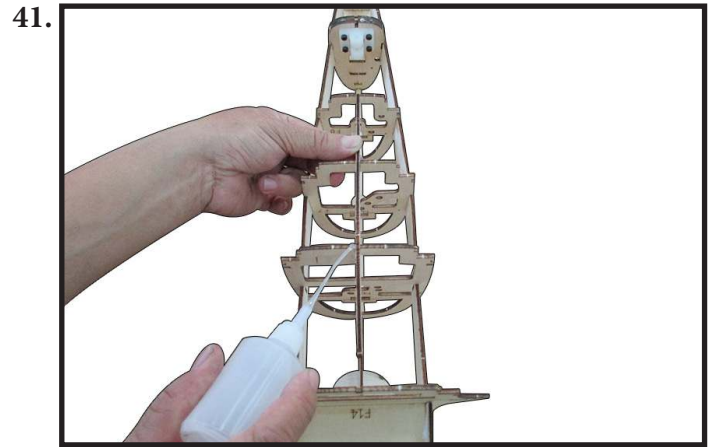
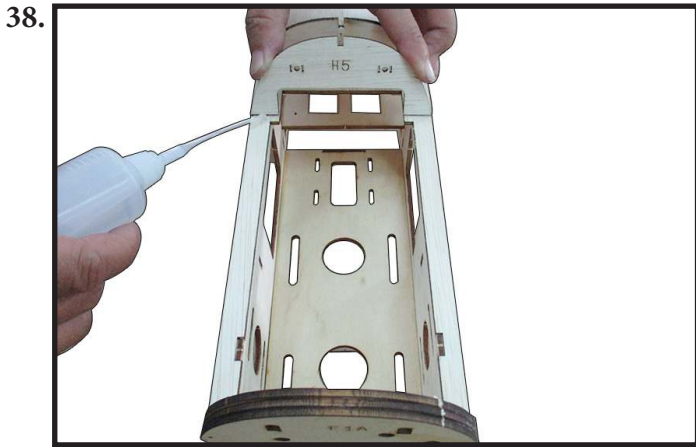


Locate and assemble F5B to fuselage by CA glue as photo shown (photo 37).

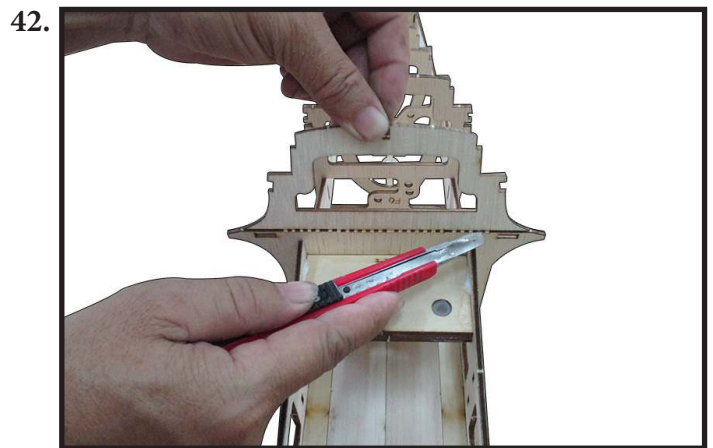
Locate and assemble F22 to fuselage by CA glue as photo shown (photo 34).



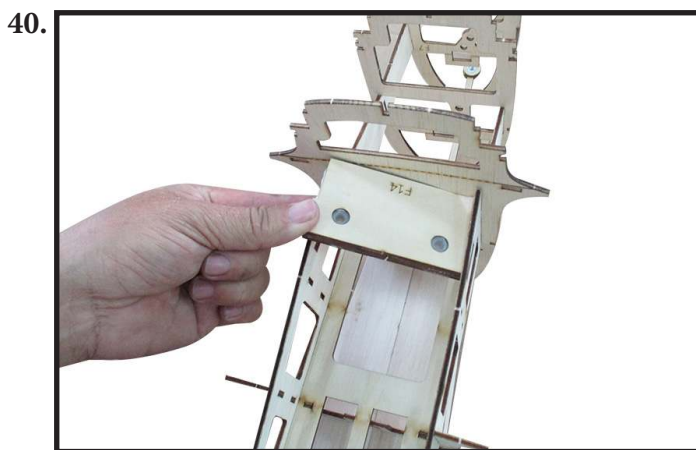
Locate and assemble H5 and F34 to fuselage by CA glue as photo shown (photo 38,39).



Use the cutter blade to cut as the hyphen on F5A ,and then you light break the below part of F5A to rear until it touch to F21. Locate and weld them CA glue as photo shown (photo 42,43).

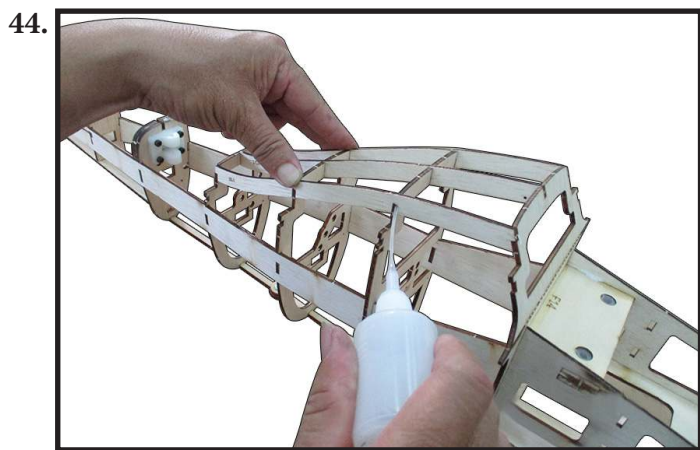


Locate and assemble F14 block (wing mount) to fuselage by Epoxy glue as photo shown (photo 40).

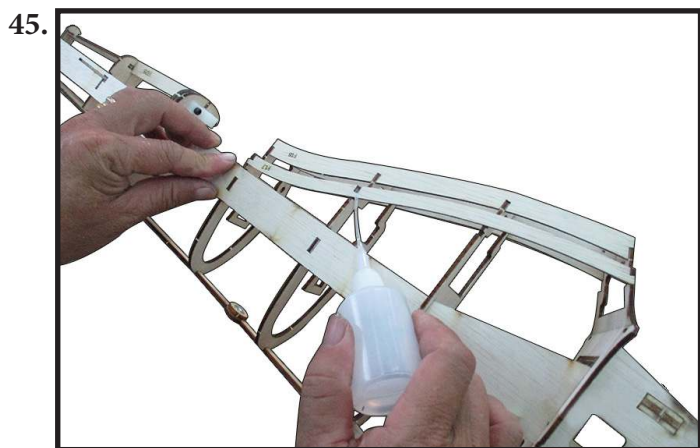


Locate and assemble F21 to fuselage by CA glue as photo shown (photo 41).

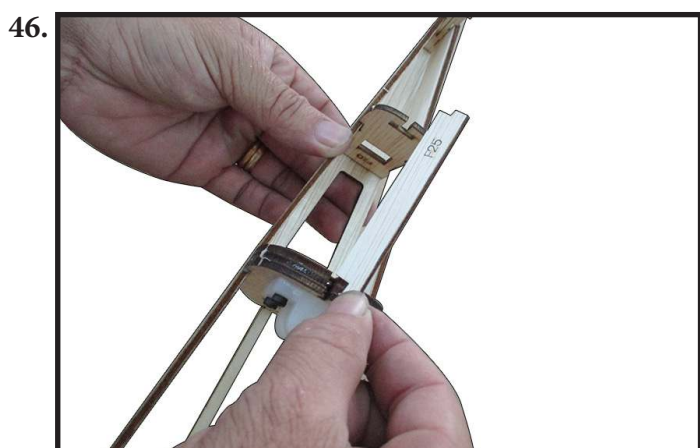
Locate and assemble F18 to fuselage by CA glue as photo shown (photo 44).



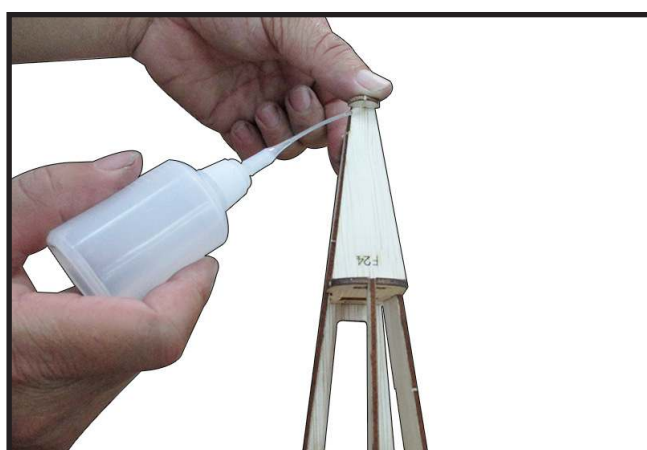
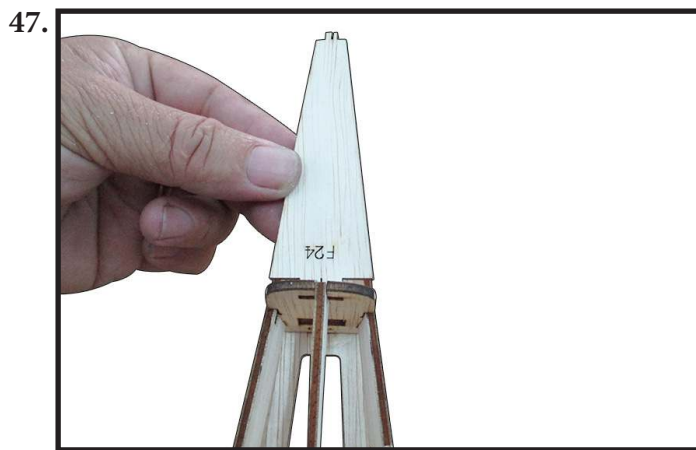
Locate and assemble F17 to fuselage by CA glue as photo shown (photo 45).



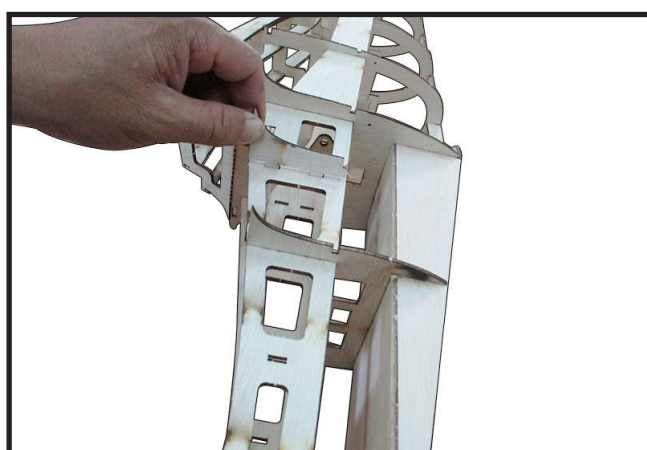
Locate and assemble F25 to fuselage by CA glue as photo shown (photo 46).



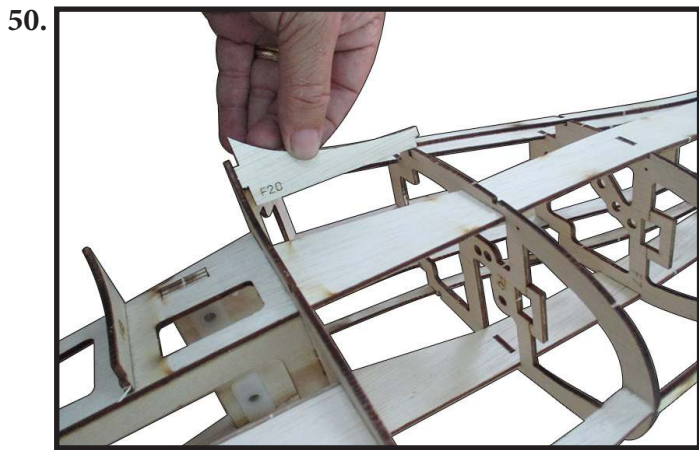
Locate and assemble F24 to fuselage by CA glue as photo shown (photo 47,48).



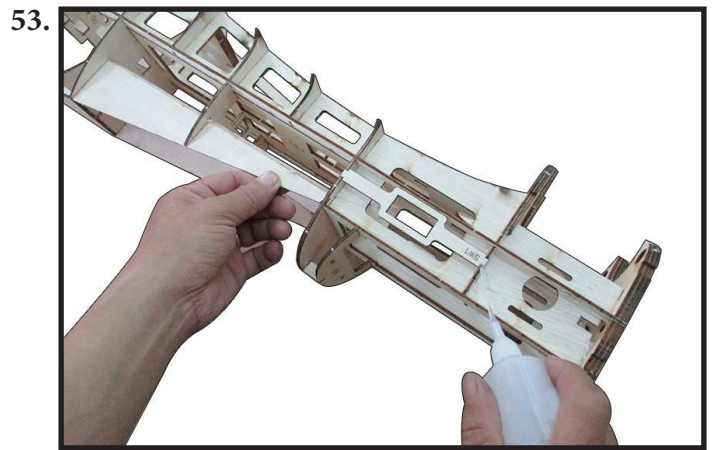
Locate and assemble F3B and F4B to fuselage by CA glue as photo shown (photo 49).



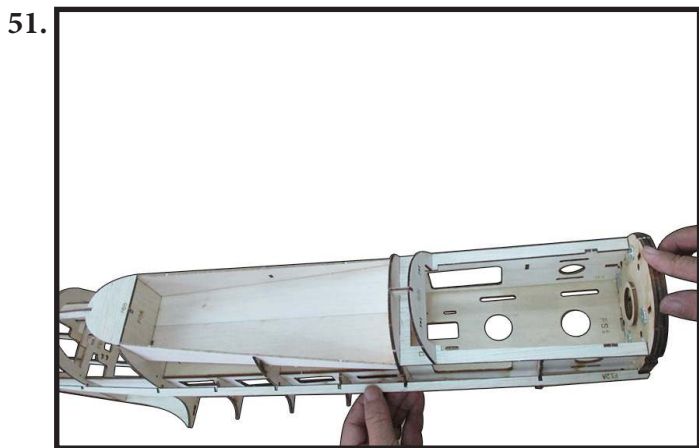
Locate and assemble F20 to right fuselage side by CA glue as photo shown (photo 50). Then, you attach F20 to the left side.



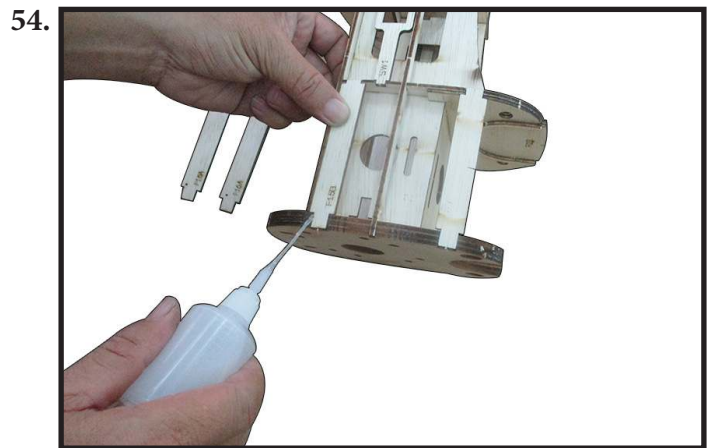
Locate and assemble F12A to right fuselage side by CA glue as photo shown (photo 51). Then, you attach F12B to the left side.



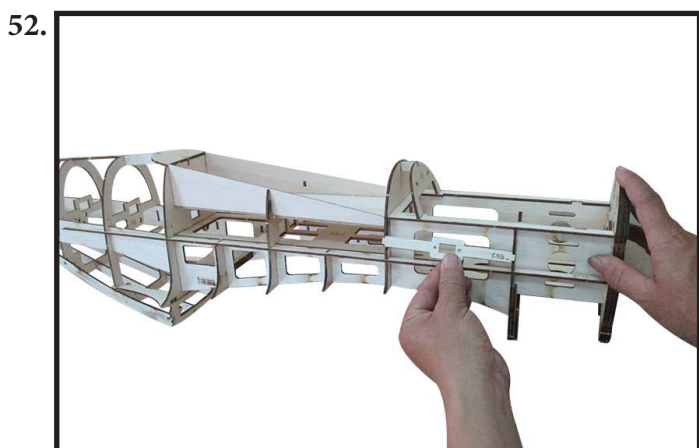
Locate and assemble F15A and F16A to right fuselage side by CA glue. Then, you attach F15B and F16B to the left side as photo shown (photo 54).



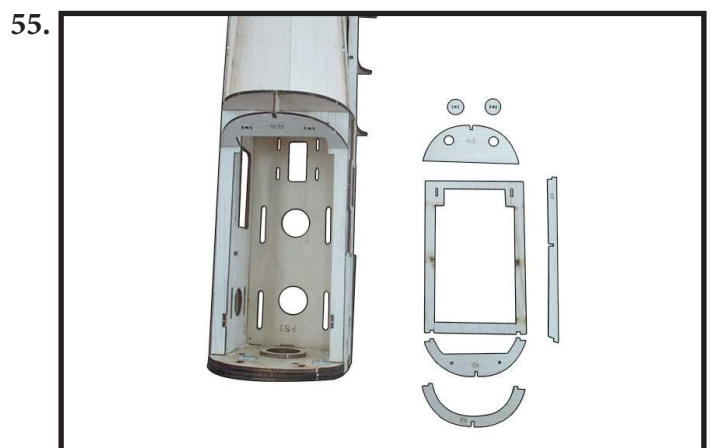
Locate and assemble SW2 to right fuselage side by CA glue as photo shown (photo 52).



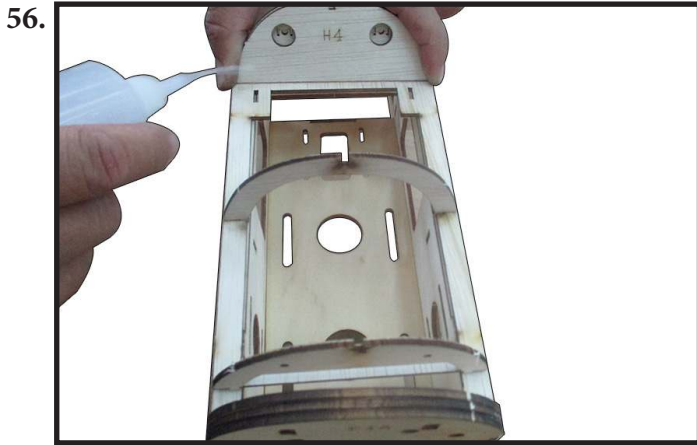
The die-cut part for building the hatch of fuselage (photo 55).



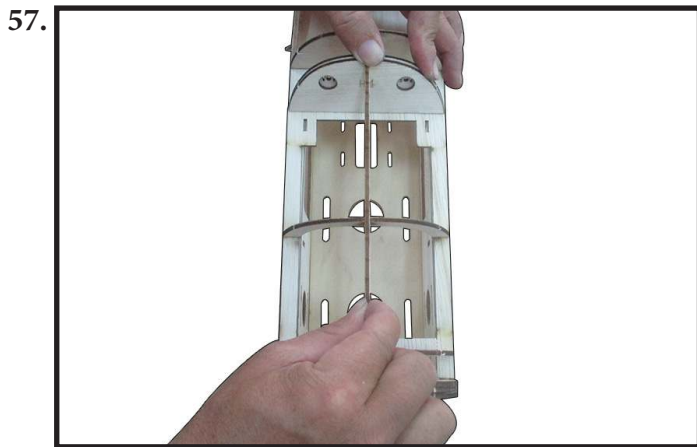
Locate and assemble SW1 to left fuselage side by CA glue as photo shown (photo 53).



Step by step, locate and assemble H2, H3, H4 to H1 by CA glue as photo shown (photo 56).



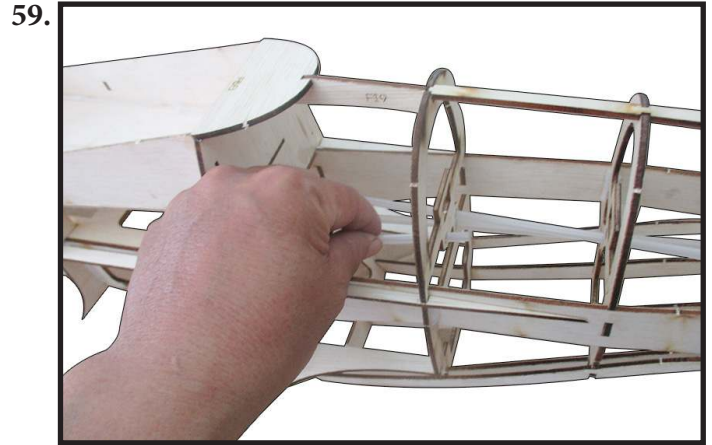
Locate and assemble H7 to H2,H3,H4 by CA glue as photo shown (photo 57).



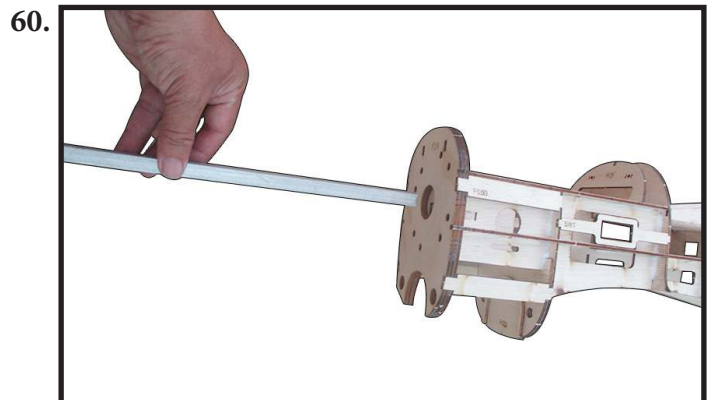
Finished the hatch as (photo 58).



Attach the plastic pushrod tube to the pushrod hole at each former fuselage as photo shown (photo 59).



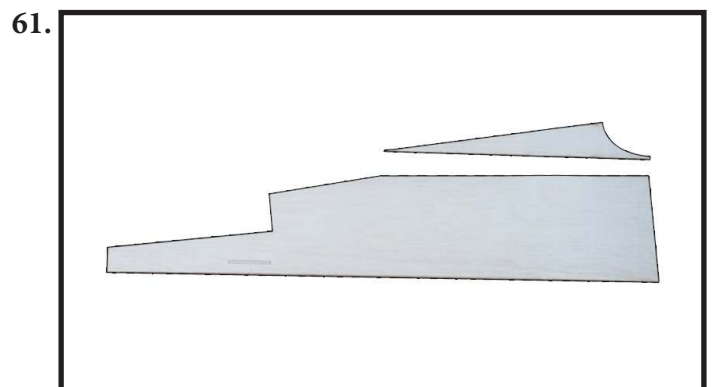
Attach the aluminum square tool bar to the square hole at each former. It is through along to fuselage to adjust to fuselage straight. Remove it after finishing covering balsa sheet for fuselage (photo 60).

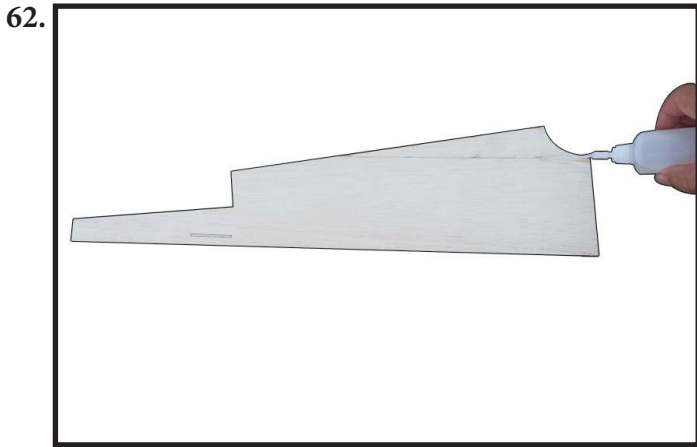


* **Sheeting of the fuselage (cover to the ribs of fuselage).**

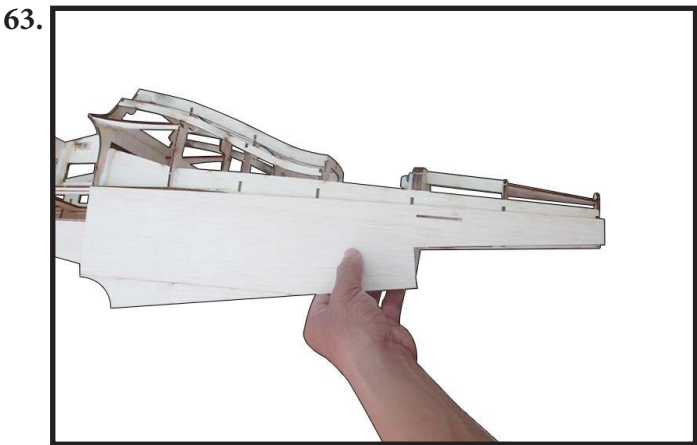
If the balsa sheet quite hard, we should use the wet towel so that making soft the balsa sheet.

Weld together SH1 and SH2 to become a sheet by CA glue as photo shown (photo 61,62).

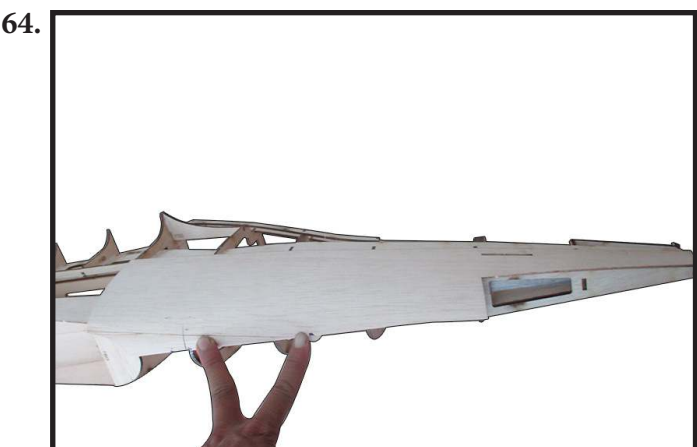




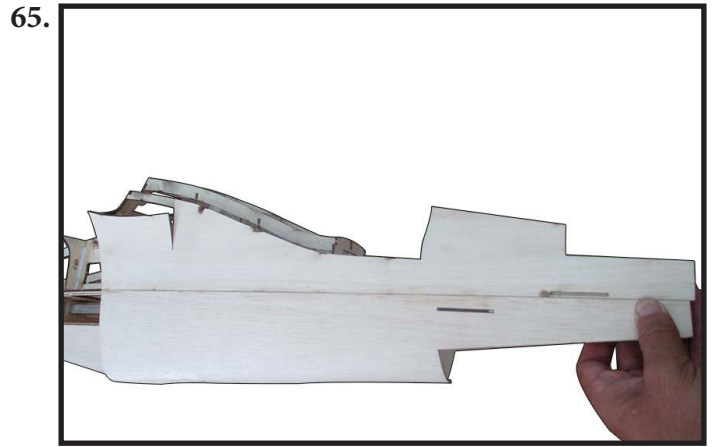
Put the sheet at top area and toward rear of fuselage as photo shown (photo 63).



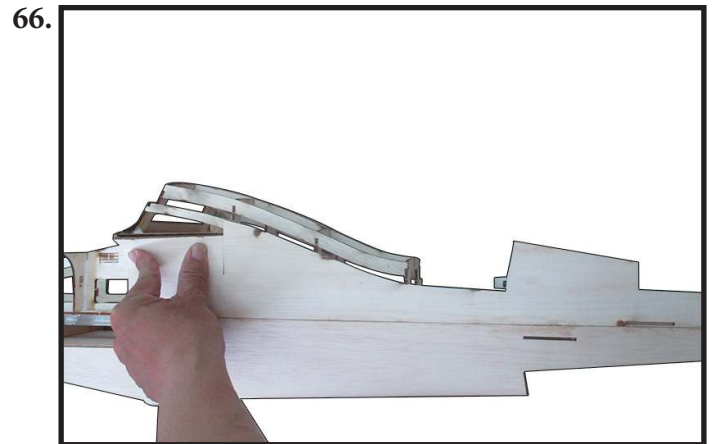
Bend the balsa sheet go to the curve of top area. Then, add CA glue and use the finger at this place until the glue dries as photo shown (Photo 64). Do the same for the other half of the top area, so that the balsa sheet keep fixed fuselage.



Put the sheet SH7 at bottom area and toward rear of fuselage as photo shown (photo 65).



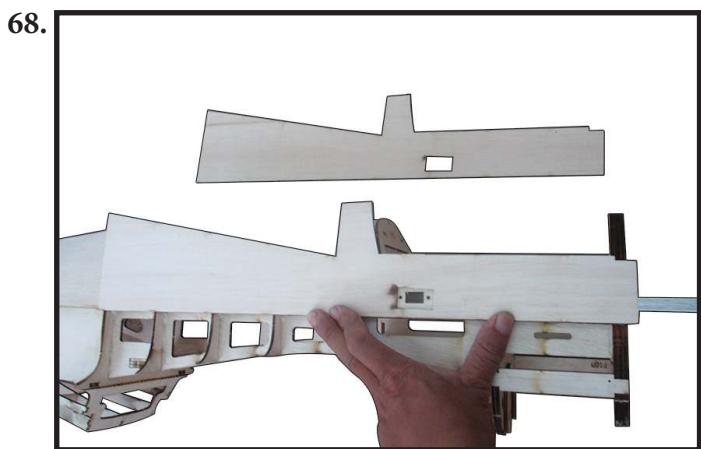
Bend the balsa sheet go to the curve of bottom area. Then, add CA glue and use the finger at this place until the glue dries as photo shown (photo 66). Do the same for the other half of the bottom area, so that the balsa sheet keep fixed fuselage.



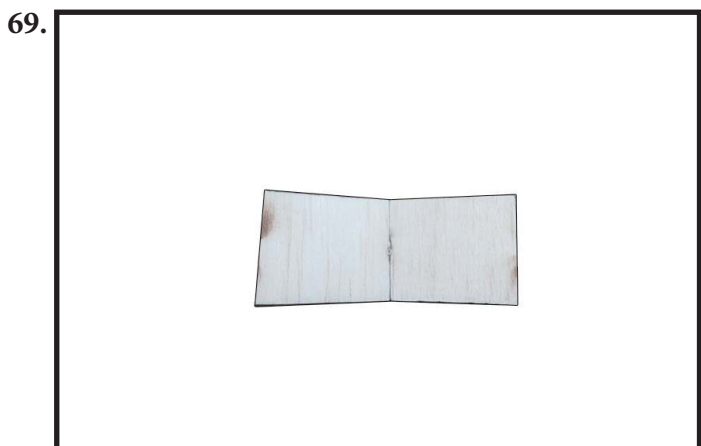
Locate and apply the sheet SH10 to fuselage (left side and right side) by CA glue as photo shown (photo 67).



Put the sheet SH3 at forward area of fuselage as photo shown (photo 68). Then, add CA glue and use the finger at this place until the glue dries. Do the same for the other half.



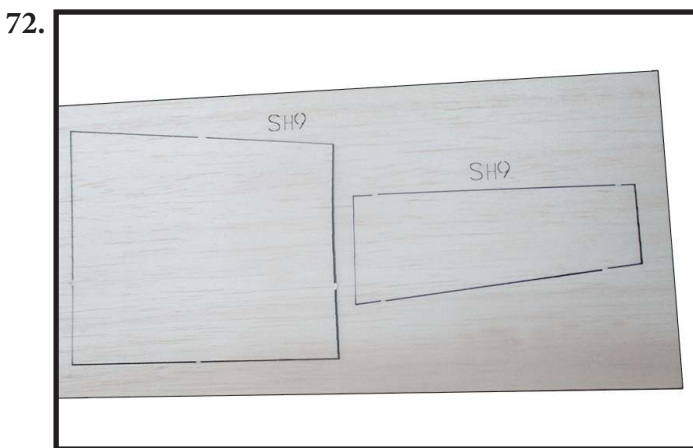
Locate and apply the sheet SH4 to fuselage (at top) by CA glue as photo shown (photo 69 &70).



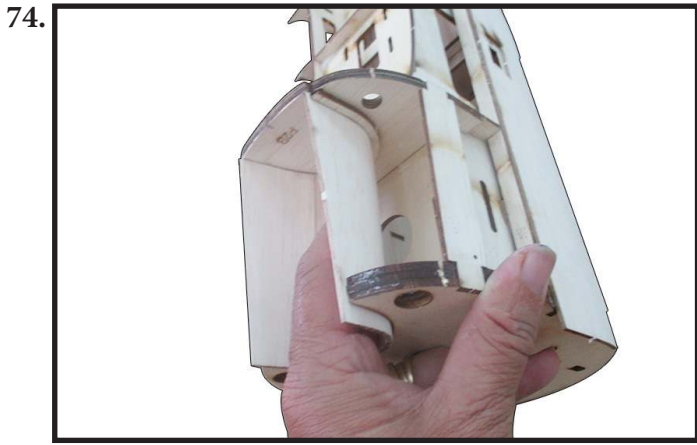
Locate and apply the sheet SH5 to fuselage (left side and right side) by CA glue as photo shown (photo 71).



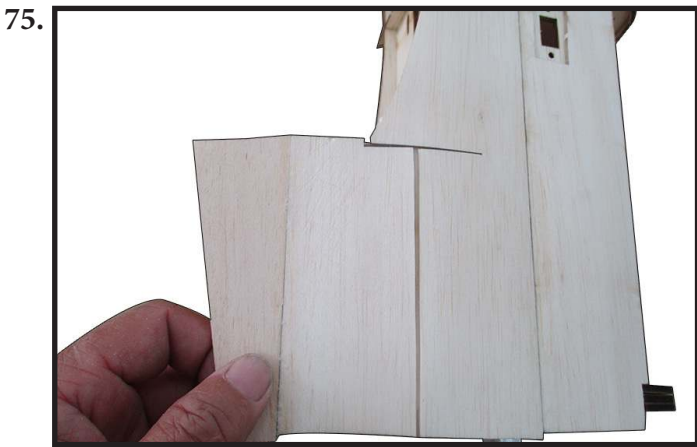
Weld together two different pieces SH9 (photo 72) to become a sheet by CA glue as (photo 73).



Put the sheet SH9 at concave down place of fuselage as photo shown (photo 74).



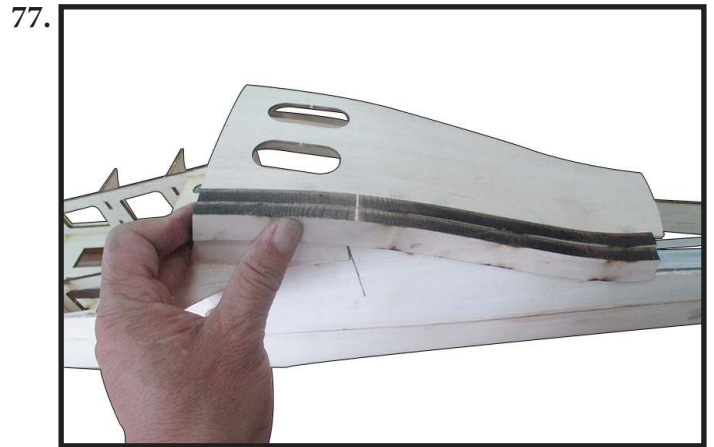
Locate and apply the sheet SH6 to fuselage (left side and right side) by CA glue as photo shown (photo 75).



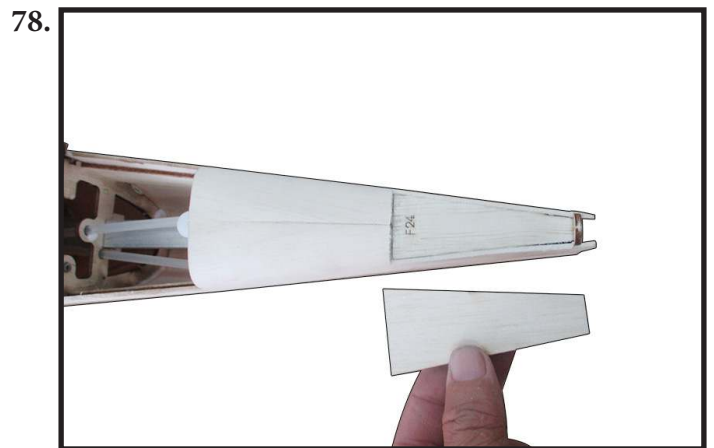
Locate and apply the sheet SH11 to fuselage by CA glue as photo shown (photo 76).



Locate and apply double 8mm balsa F8A to fuselage (left side and right side) by CA glue as photo shown (photo 77).

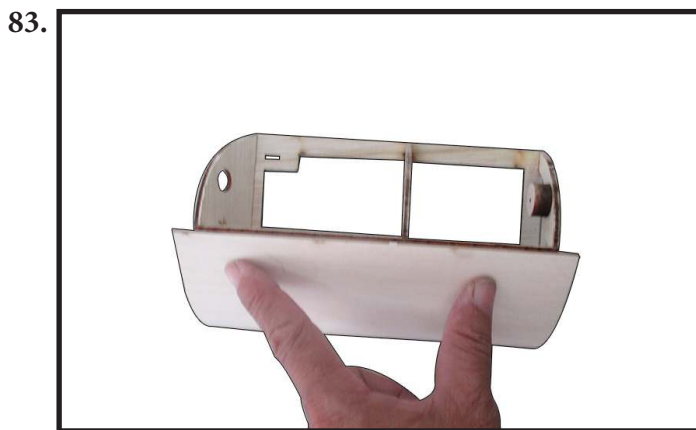


Locate and apply 8mm balsa F24A to fuselage by CA glue as photo shown (photo 78).

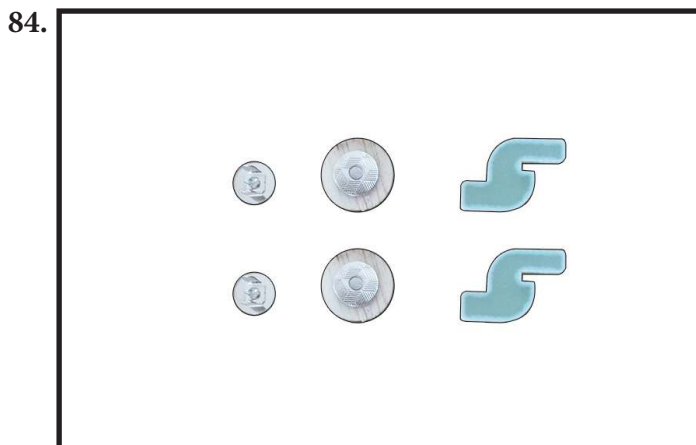


Some place can't bend by balsa sheet because curve shape is too short, the balsa sheet will break easily. So the balsa block is inserted. Then, cut down the balsa block to shaping curve and sanding (photo 79, 80, 81).

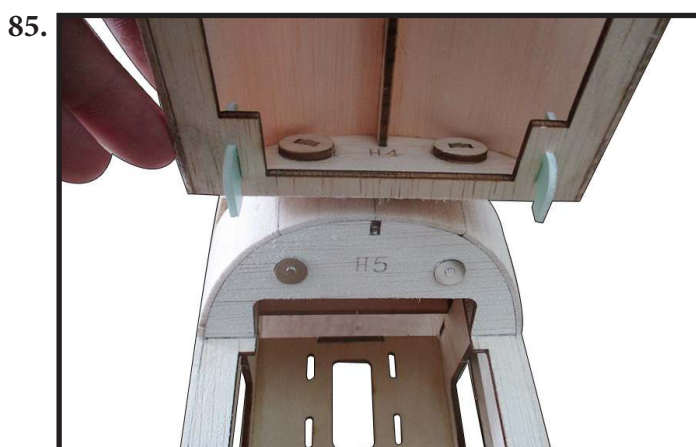
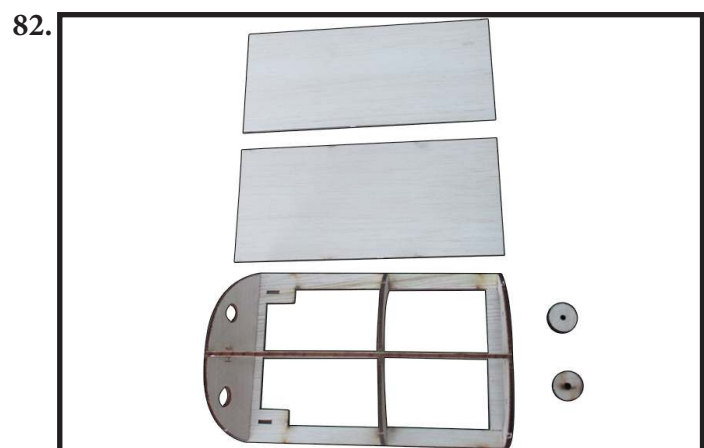




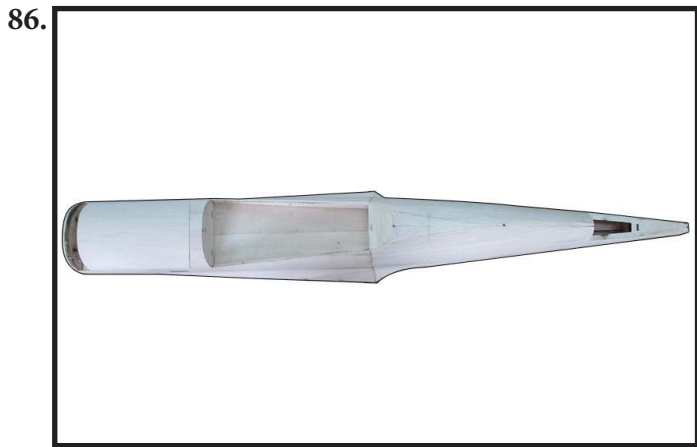
Locate and assemble Magnets and Hook to the top hatch by CA glue as photo shown (photo 84, 85).



Cover sheet the top hatch of fuselage. Locate and apply the balsa sheet SH12 and bend the balsa sheet go to the curve (left side and right side) by CA glue as photo shown (photo 82,83).



Setup the hatch and the fuselage so that the top of hatch seamless the top of fuselage by sanding tool (photo 86).



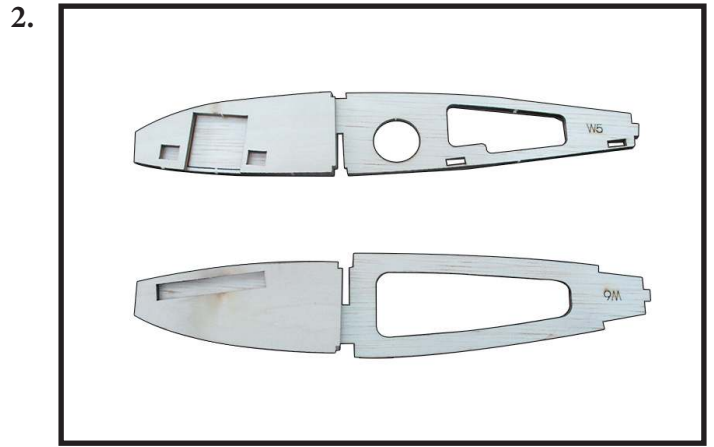
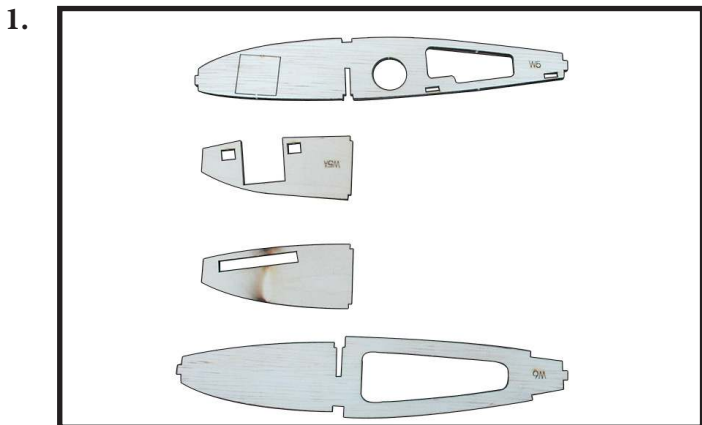
Locate and cut the balsa sheet at hole for antenna by (photo 87).



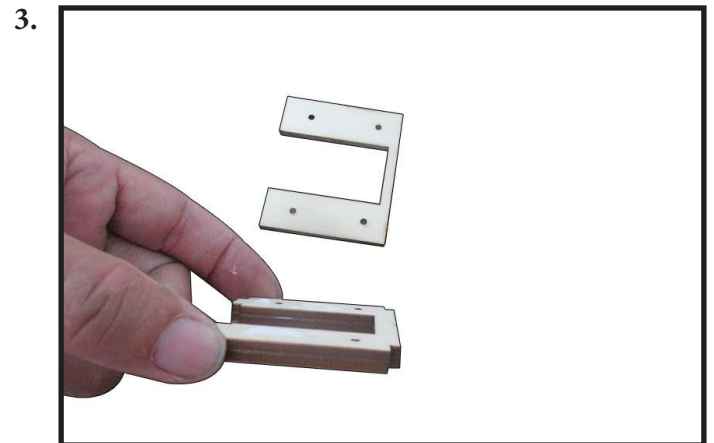
THE WING

*** Prepare the gear mount of wing.**

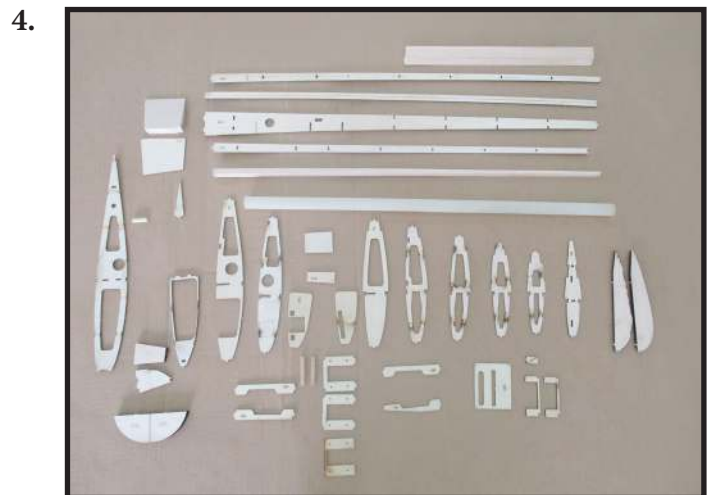
Locate and assemble W5A to W5; W6A to W6 by epoxy as photo shown (photo 1 and 2). **NOTE: Apply to assemble ribs of wing left and ribs of wing right are symmetrical to each other.**



Locate and assemble W19 to W20 by epoxy as photo shown (photo 3). **NOTE: Apply to assemble gear mount of wing left and gear mount of wing right are symmetrical to each other.**

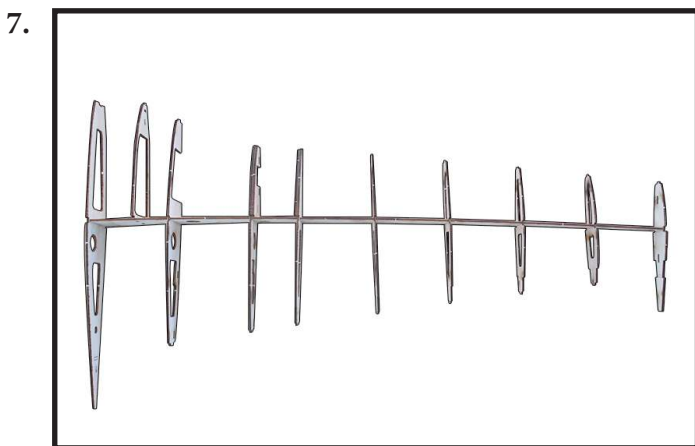
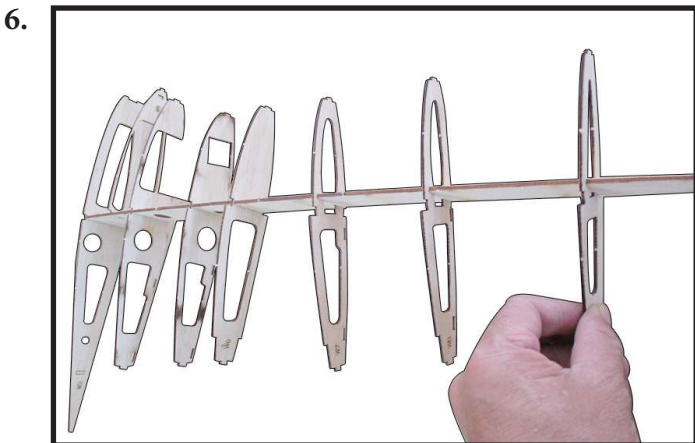
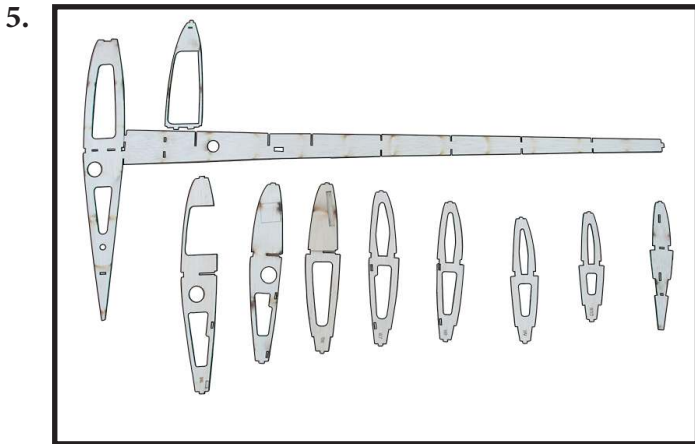


Prepare all parts to assemble a wing (Photo 4). **NOTE: It is recommended to divide all parts into groups of the wing left and groups of wing right before building to avoid assembling them in the same direction.**

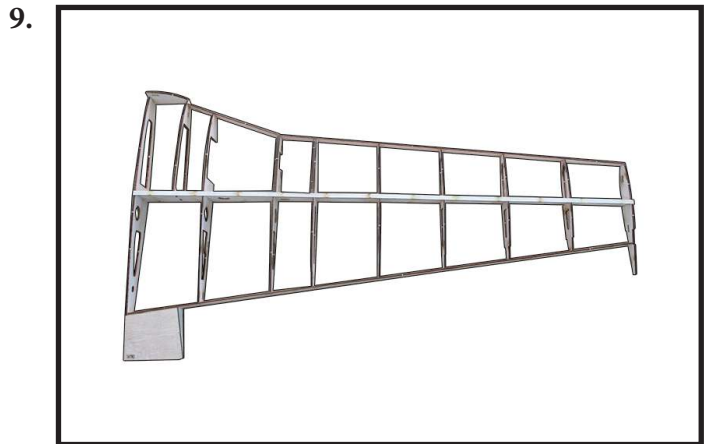
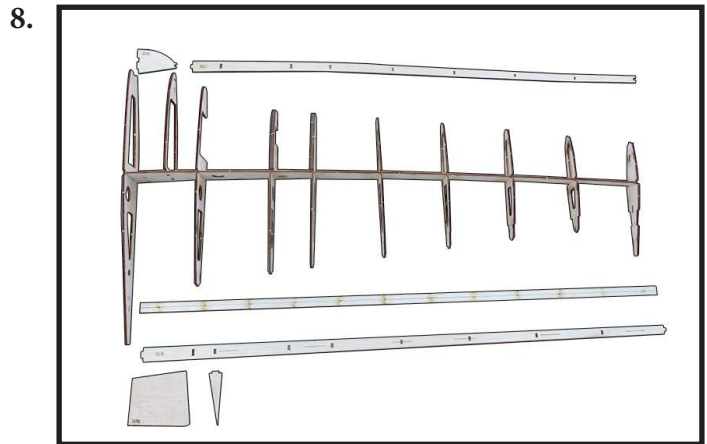


*** Build the wing.**

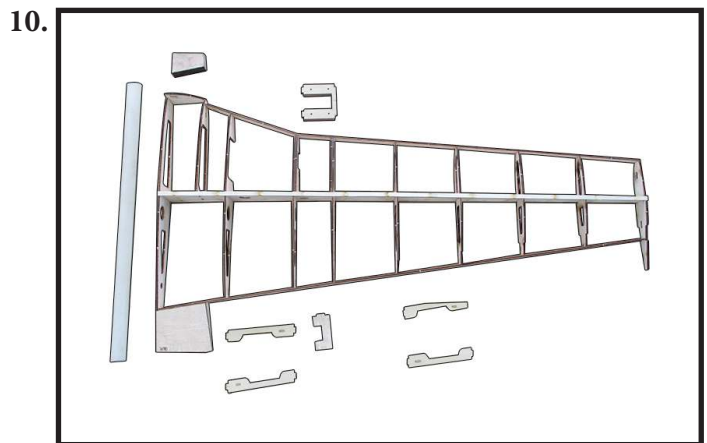
Locate and assemble W2 to W11 with W28 (main wing spar) as shown photo (Photo 5,6,7).



Locate and assemble W27 (Leading Edge) to front of wing, and W30 (Trailing Edge) to rear of wing as shown photo (Photo 8,9).



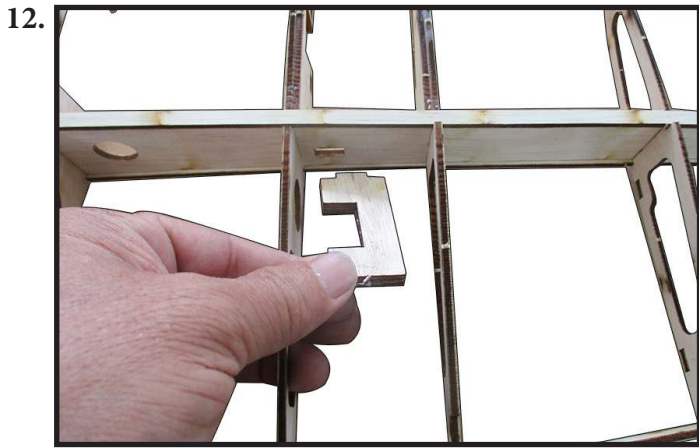
Prepare to assemble the balsa block, gear mount, servo mount, wing tube, lock wing tube as shown photo (Photo 10).



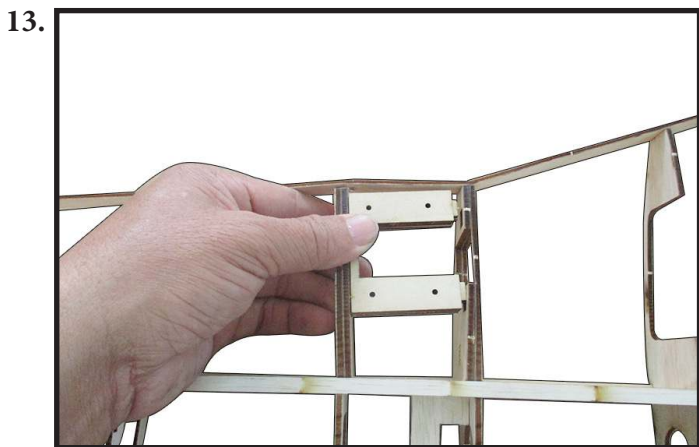
Locate and apply the balsa block (W15) to front of wing (W14) to increase the thickness at here (Photo 11).



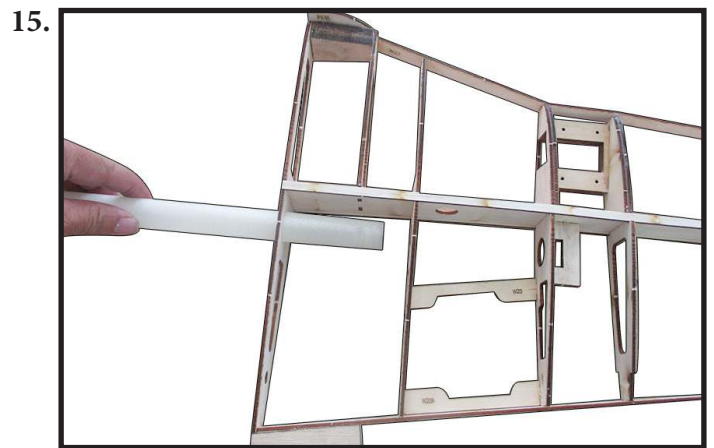
Locate and assemble lock wing tube (W18) as shown photo (Photo 12).



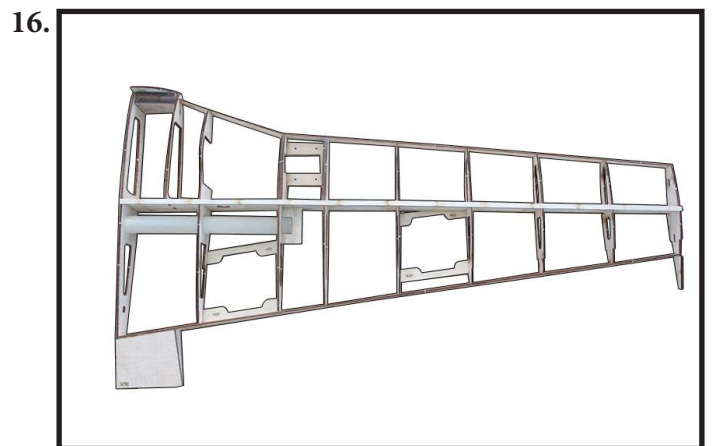
Locate and assemble gear mount (W20) by Epoxy to sure hardly as photo shown (Photo 13, 14).



Locate and assemble wing tube. Light sanding the wing tube to it can through to holes easily as photo shown (photo 15).

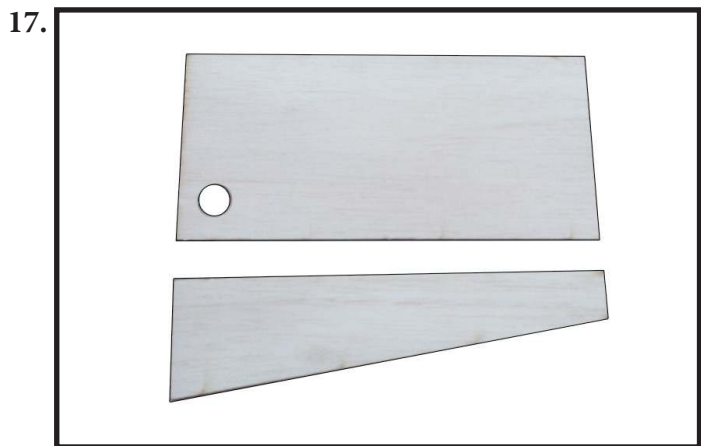


Apply the 8mm balsa block spar to W27 (Leading Edge) at front of wing, and sanding for them seamless together as shown photo (Photo 16).

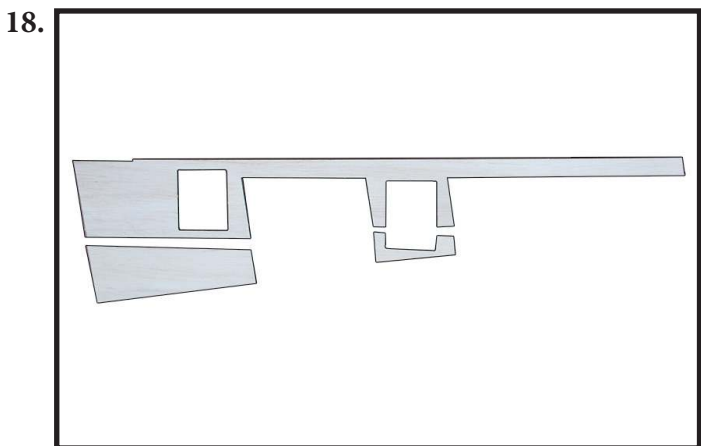


*** Finishing The Outer Wing Panels.**

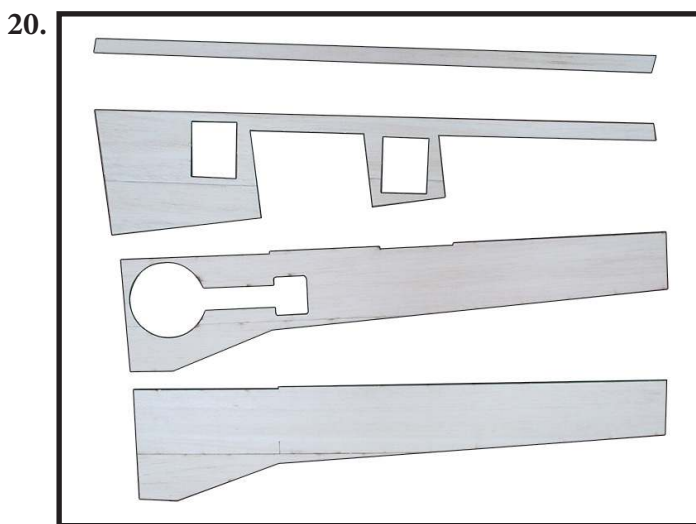
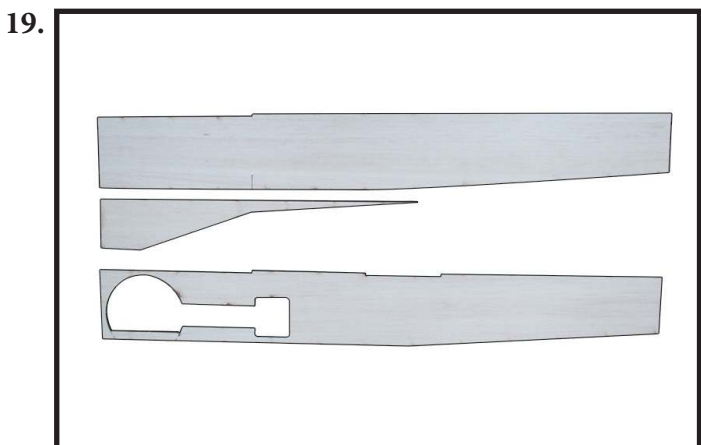
Weld together two different balsa sheet pieces W33 to become a sheet by CA glue as (photo 17).



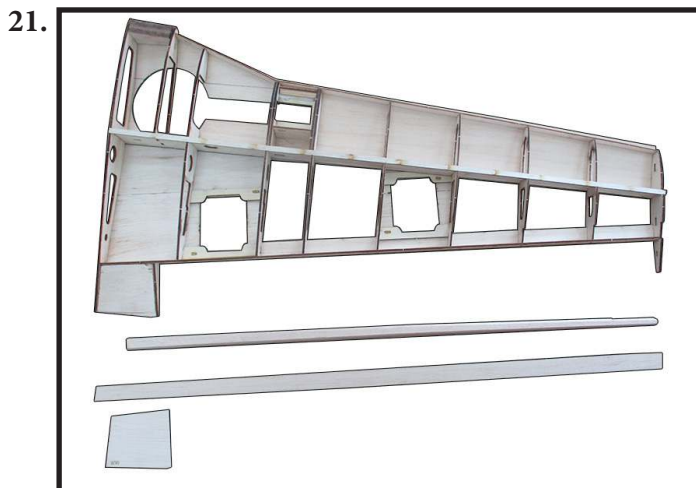
Weld together three different balsa sheet pieces W34 to become a sheet by CA glue as (photo 18).



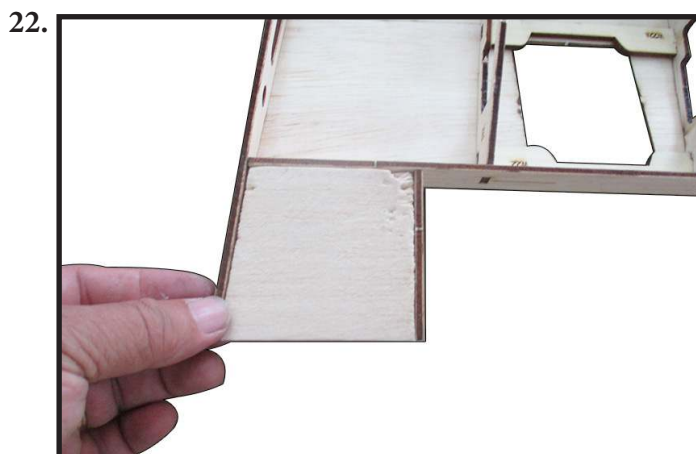
Weld together the balsa sheet of W31; the balsa sheet of W32 as photo shown (photo 19,20).



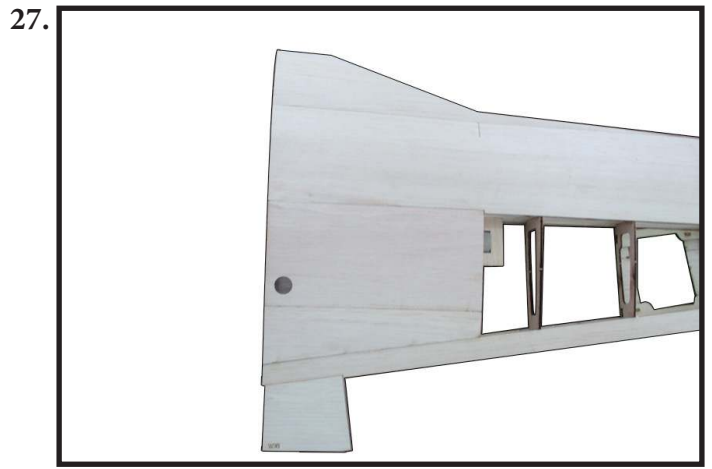
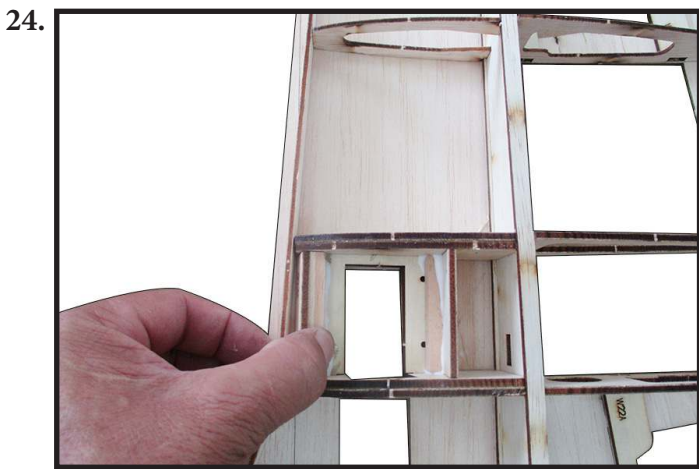
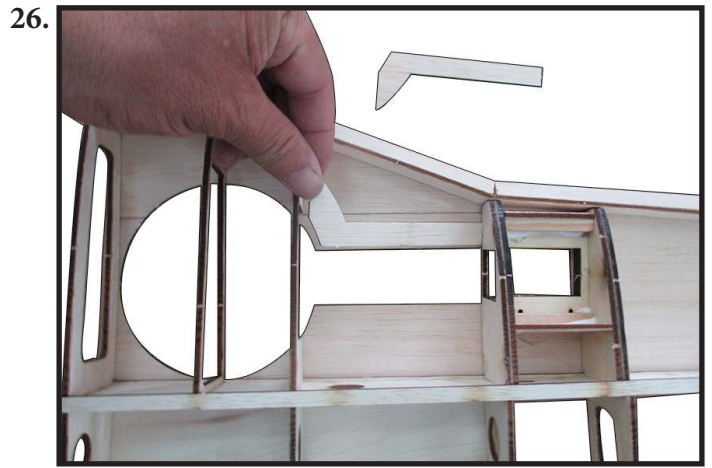
Cover sheet for wing. First, covering the bottom of wing. Step by step do it one after another in order W32-W33-W34 as (photo 21).



Insert the special balsa block at place as (photo 22).

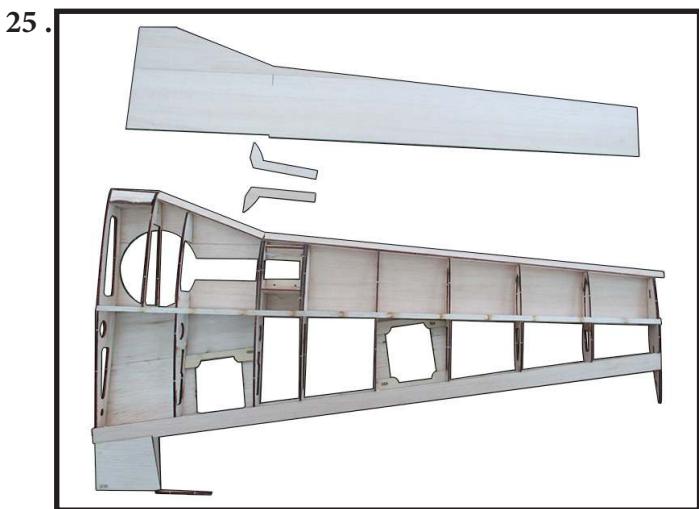


Locate and assemble W16, W17 and two hard wood bar to sure hardly by epoxy glue as photo shown (photo 23,24).



Reinforced W37 to sheeting at the wheel area as photo shown (photo 25,26,27). Then, step by step cover sheet one after another in order W31-W33-W35-W38 for top of wing.

Assemble W39 so that covering the open slot between two sheets W38 as (photo 28).



Finish as (photo 29).



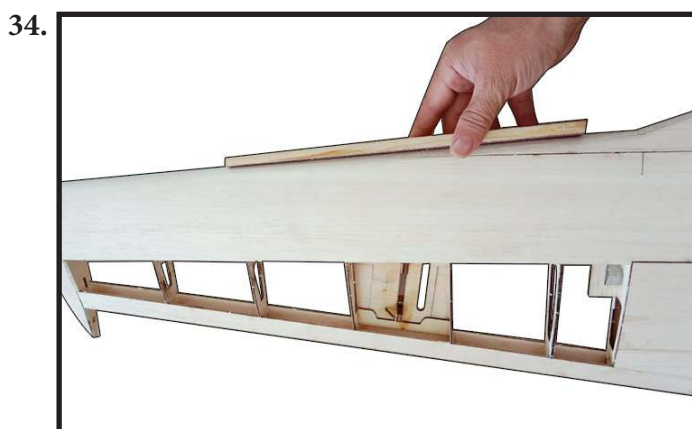
Locate and assemble W12 (wing tip) by epoxy glue as photo shown (photo 30).



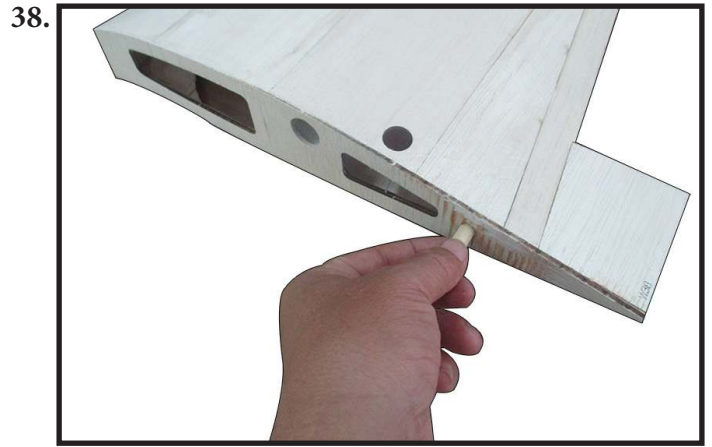
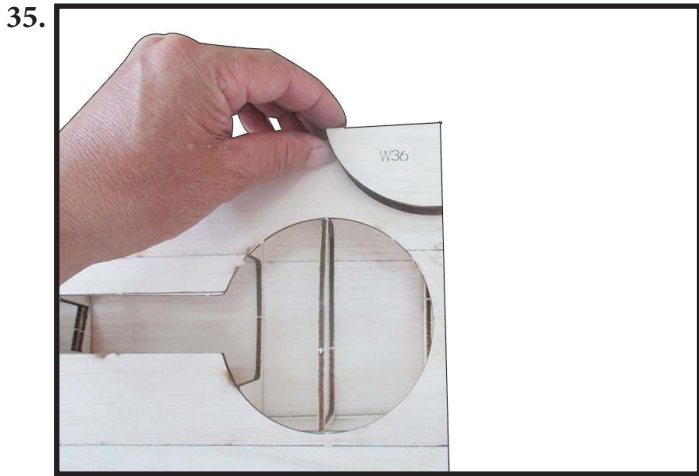
Apply two 8mm balsa sheets W13 into W12 (top and bottom) by epoxy glue. Then, cut down W13 so that shaping as wing tip, use sanding tool to smooth as photo shown (photo 31,32,33).



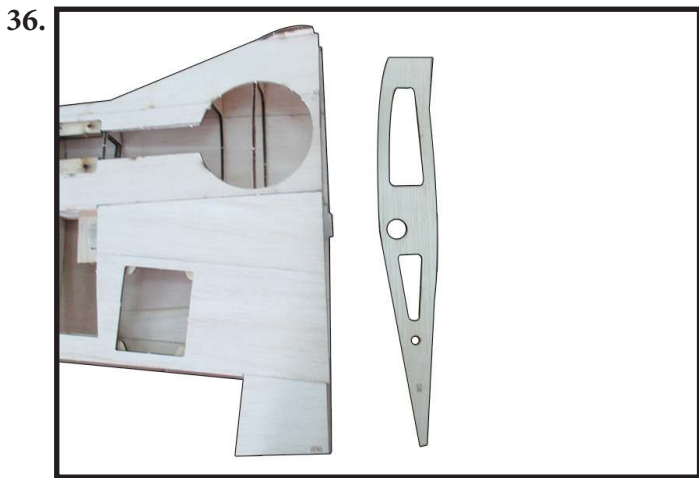
Use sanding tool to make curve shape for L.E. area so that it seamless as curve of ribs, and make smooth for L.E. Note: need to keep straight (avoid rough) as photo shown (photo 34).



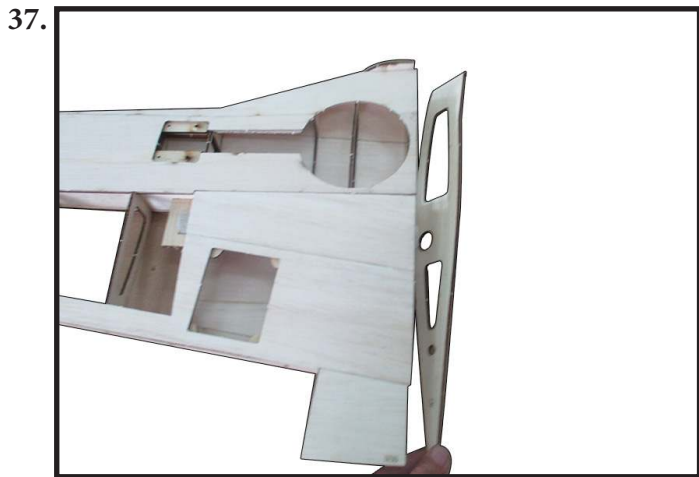
Assemble special 8mm balsa sheet W36 to wing left and wing right as photo shown (photo 35). Then, cut down W36 so that shaping as W2, use sanding tool to smooth (do like this for wing left and wing right). Join two wing panel together by wing tube (Ø 19mm). Set up two wings until they have to close touch at between (no gap) by the sanding tool. Then, locate and assemble W1 at each of wing (left and right) (Photo 36,37).



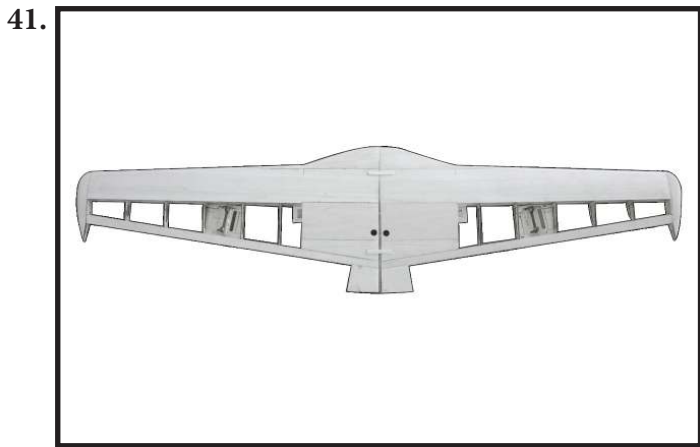
Sanding to smooth for sheet and W1 as (photo 39).



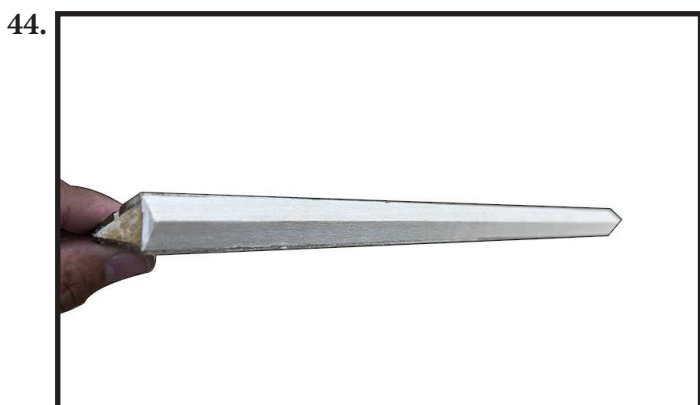
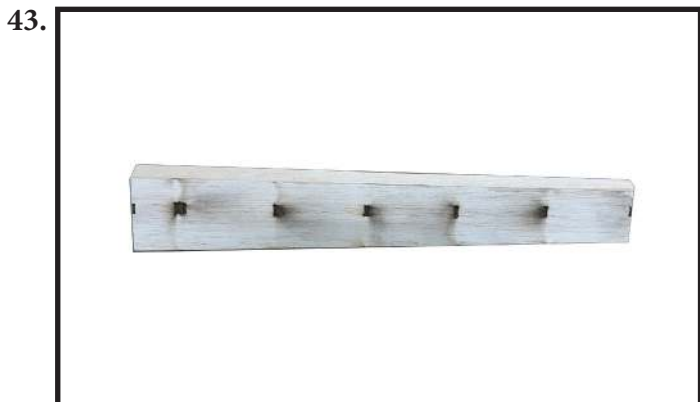
Finish as (photo 40,41).



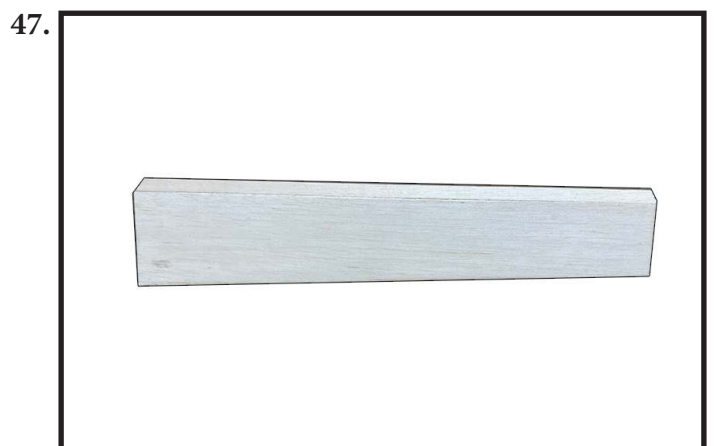
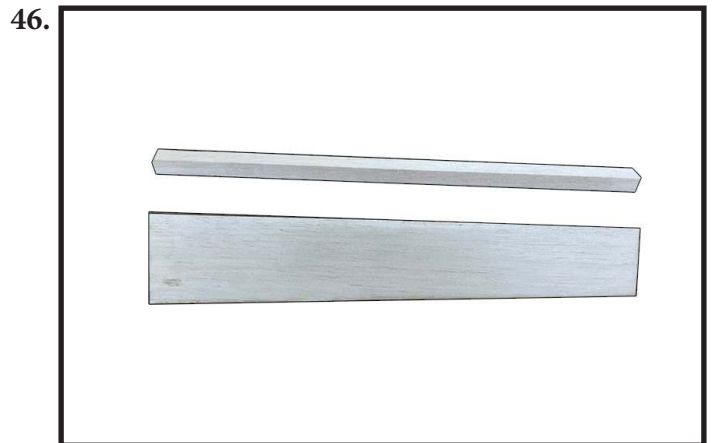
Locate and assemble the 8mm dowel at wing root for a side as (photo 38).



Locate and assemble the aileron (all ribs and triangle balsa bars) as (photo 42,43,44).

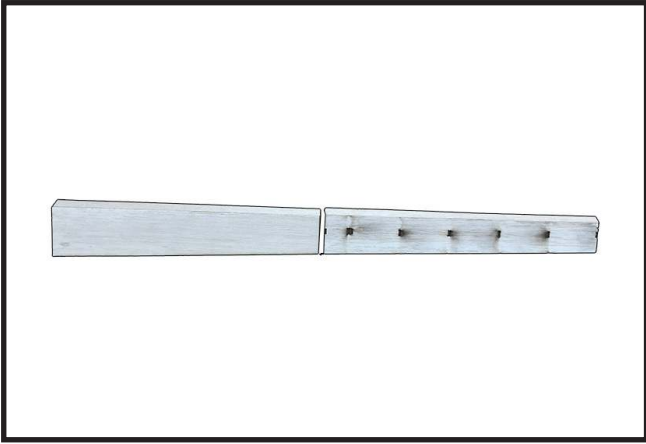


Locate and assemble the flap (all ribs and triangle balsa bars) as (photo 45,46,47).



Finish for Flap and Aileron. (Photo 48).

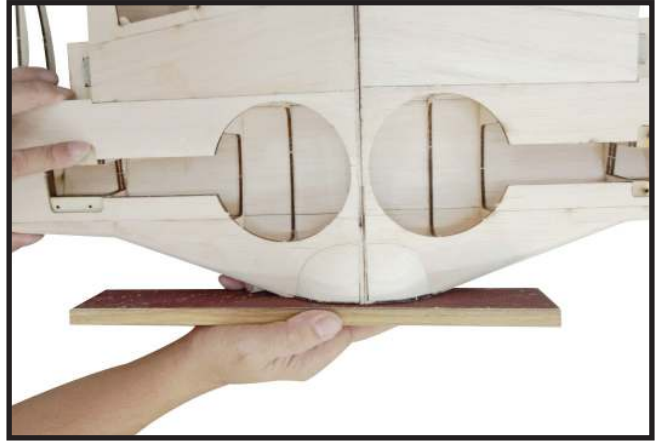
48.



* **Assemble the servo mount for Flap and Aileron.**

Locate and assemble W25 (2pcs), W24, W26 as photo.

2.

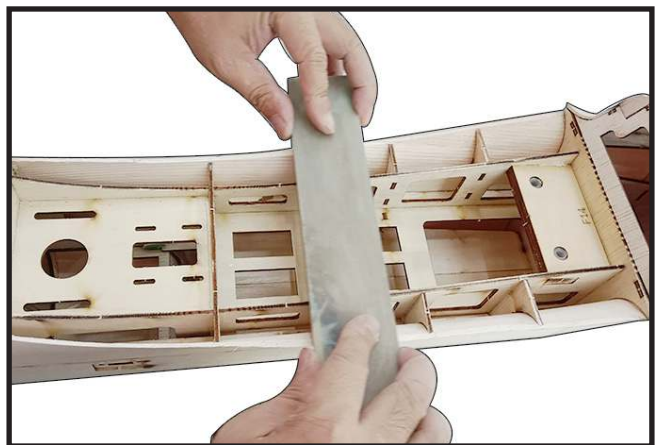


Sanding to smooth (not rough) at interface on fuselage (the edges of fuselage where the wing panel intersect to the fuselage) as photo shown (Photo 3).

42.



3.

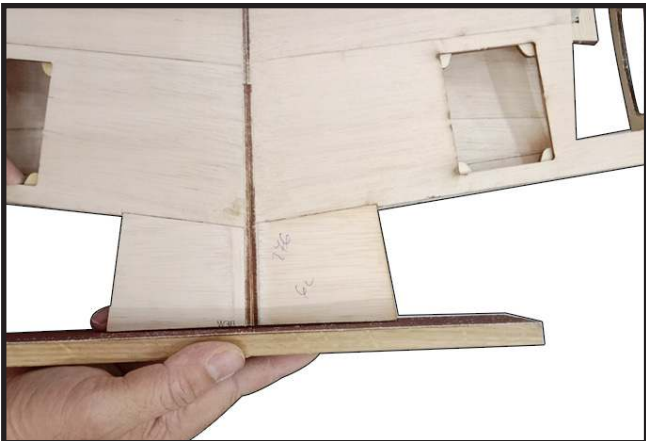


FITTING THE WING TO THE FUSELAGE

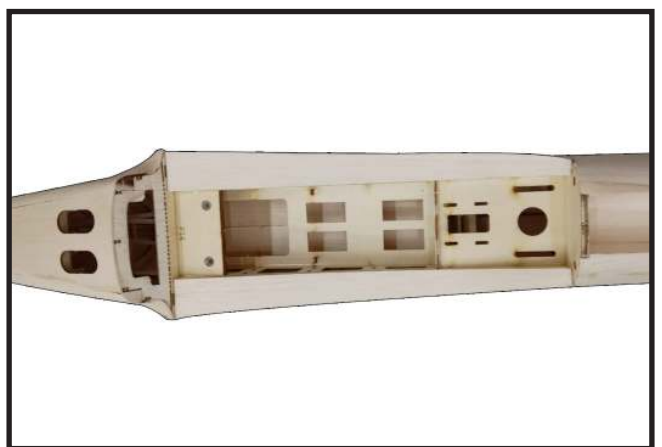
Sanding to flat the edge at forward (front dowel area) and edge at rear (wing bolt mount area) as photo shown (Photo 1,2).

Cover the ribs at interface by SH13 sheet (Photo 4).

1.



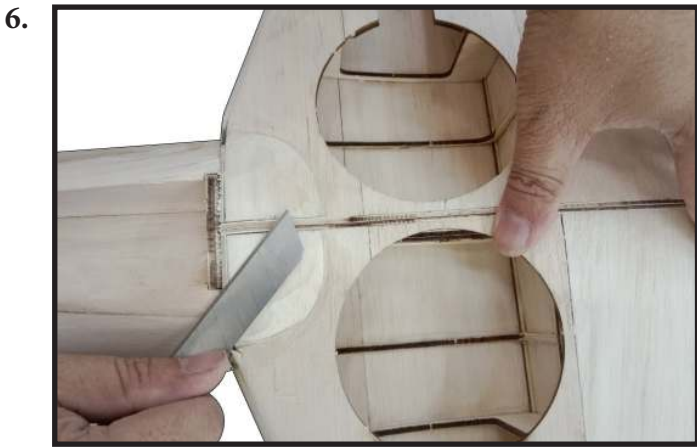
4.



Fitting the wing to the fuselage and adjust the SH13 sheet so that there is not gap at interface. Then, add CA glue to keep fixed SH13 (Photo 5).

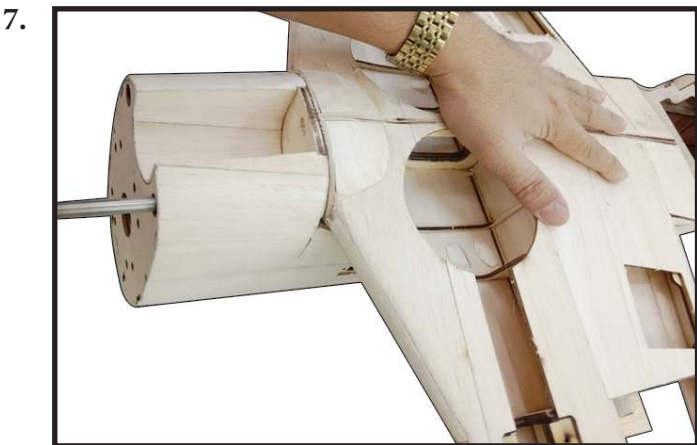


Use the paper blade cut down and use sanding tool to make flat and seamless from the fuselage to the bottom of wing (Photo 6).



***Attach dowel to front of wing.**

Attach to the pen through from hole on F1, go on until it touch the front of wing to take the ink mark. This is position of the 8mm dowel on wing (Photo 7).



At the front of wing, drill two holes (Ø 8mm) for mounting two dowels, the center of hole is ink mark point. (Photo 8).



Attach dowel into wing so that dimension of a remaining dowel part outside is 10mm (Photo 9).



*** Drill the holes for bolt at rear of wing.**

Use the sharp screw to take point of mark so that locating of hole (Photo 10). Then, put the wing on fuselage and light press down at the sharp (take two points). Next step, from the center point drill two holes (Ø 6.5 mm) (Photo 11, 12, 13). These are the bolt hole so that fixed wing to fuselage.





Put fiberglass part on wing to locate place of holes. Then, drill two holes on the special fiberglass part. (Photo 15,16).



Locate at holes and assemble the plywood washer ring and the fiberglass tube inside special fiberglass part. These are the tunnel for the bolt through. (Photo 17,18,19).

* Assemble the special fiberglass part at bottom of wing.

Assemble F5 to fiberglass part (Photo 14).



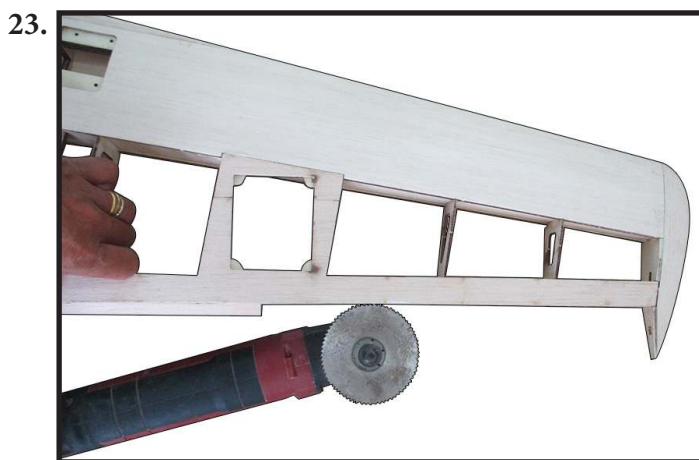
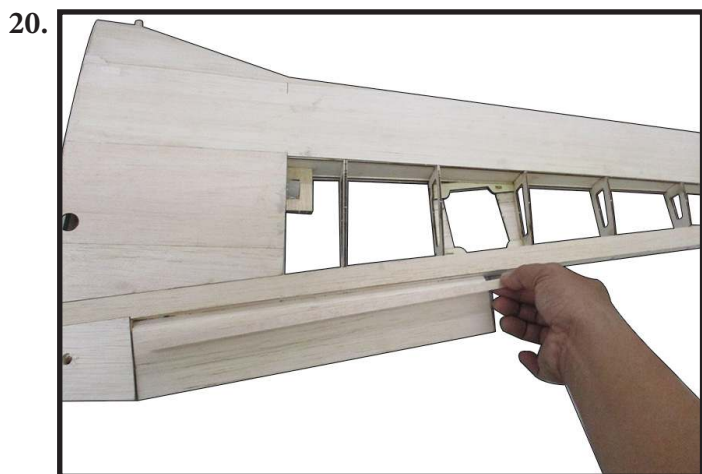


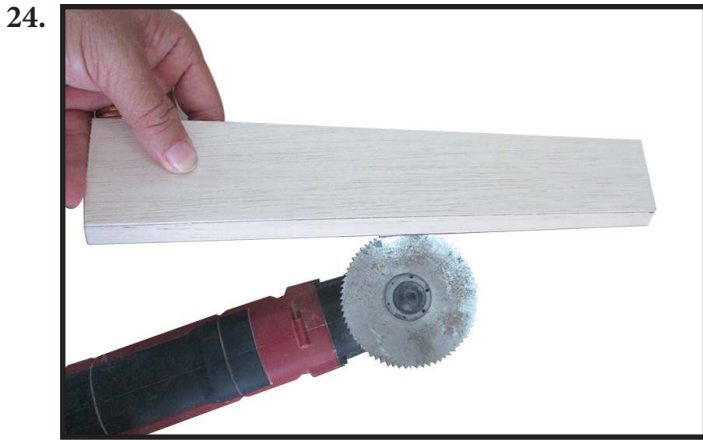
Reference and compare position of the laser cut line available (hinge's slot) at trailing edge of wing with Flap and Aileron so that locate position of hinge's slot at Flap and Aileron. Then, use the blade tool sawn the slot for hinge at Flap and Aileron (Photo 22,23,24).



*** Flap and Aileron.**

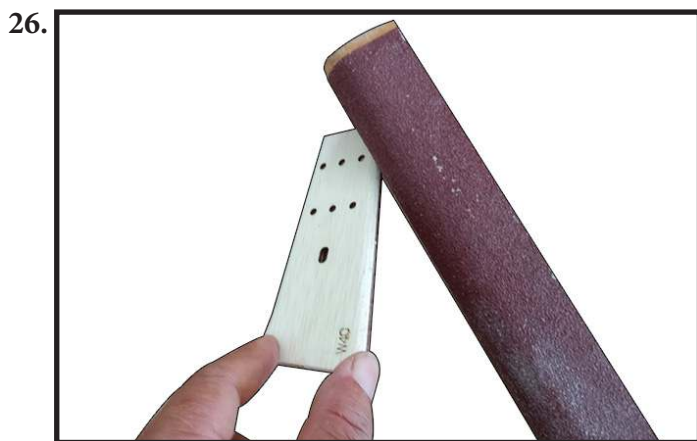
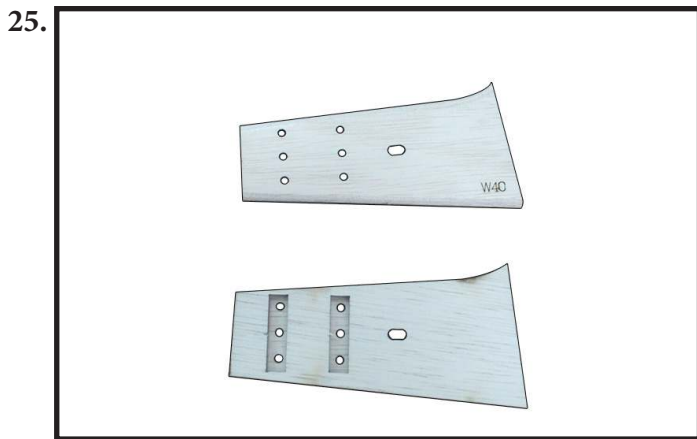
Apply to trailing edge a triangle block spar with length value equal length of flap. It will allow flap go down only (Photo 20, 21).





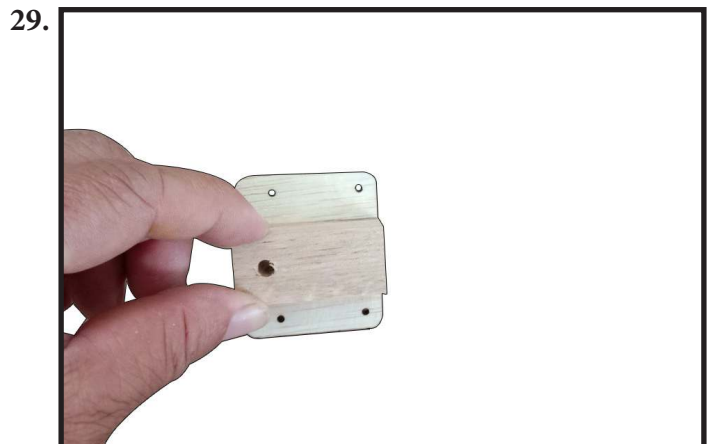
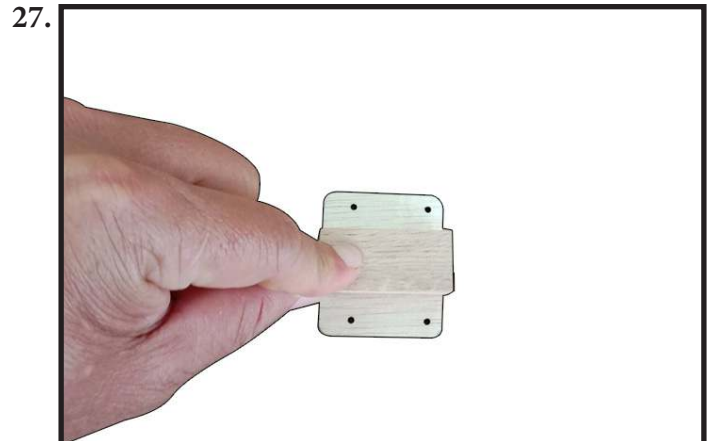
*** Gear door .**

Locate and apply W40 to W41 by CA glue. Then, make rounded the edge by sanding tool (Photo 25, 26).



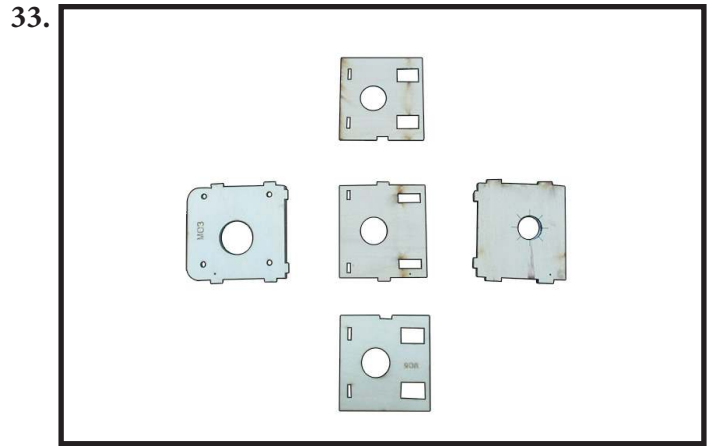
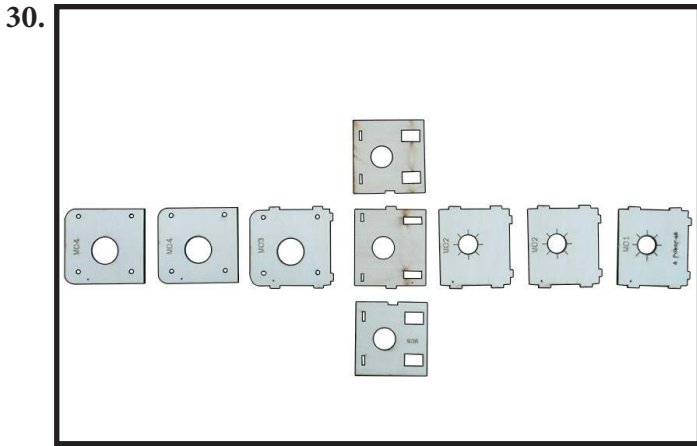
*** Landing Gear mount.**

Locate and apply W21 (2pcs) to balsa square block by CA glue. Then, drill a hole(Ø 4.2mm) for Fixed Landing Gear (Photo 27,28,29).

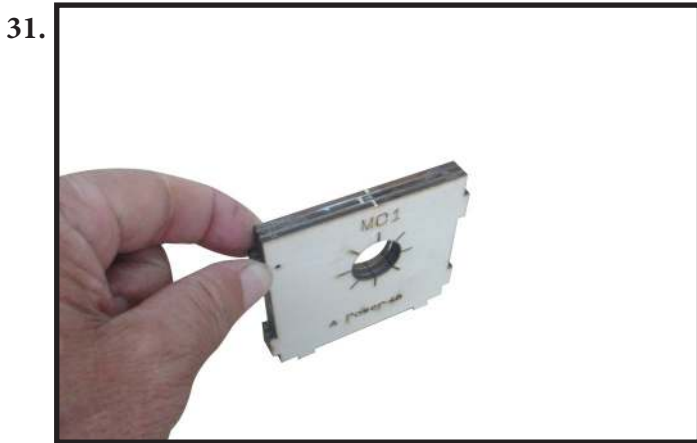


*** Electric Motor mount.**

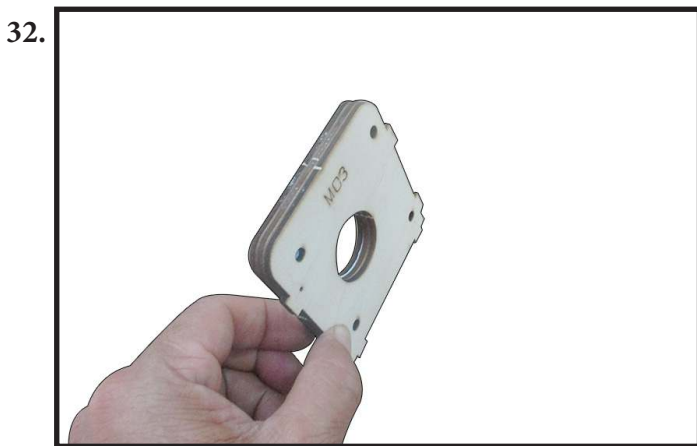
As shown (photo 30). All parts are available for assembly the mount of motor.



Locate and apply MO1 to MO2 (2pcs); MO3 to MO4 (2pcs) (Photo 31, 32).

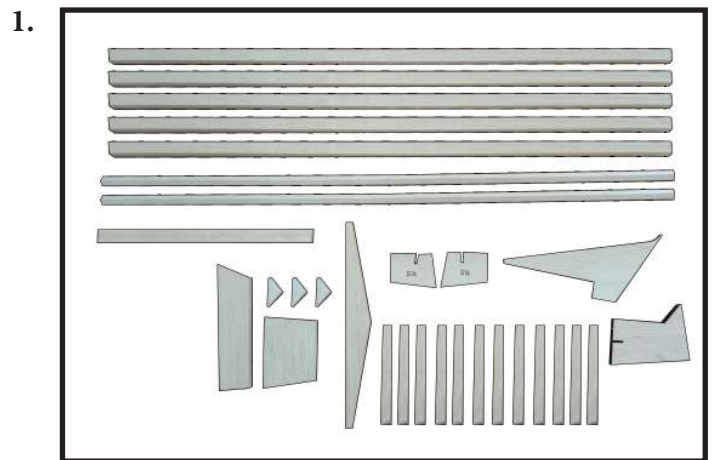


STABILIZER AND ELEVATOR



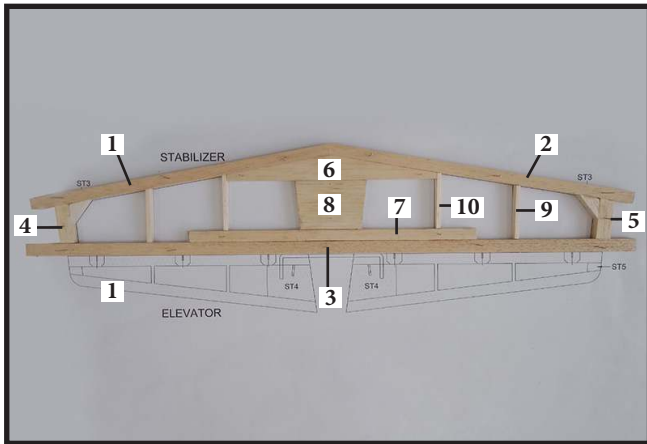
Locate and assemble 5 pieces to become the box (photo 33,34).

As shown (photo 1). Balsa 8mmx10mm x550mm spars and the laser cut parts are available for assemble the Stabilizer and Elevator.



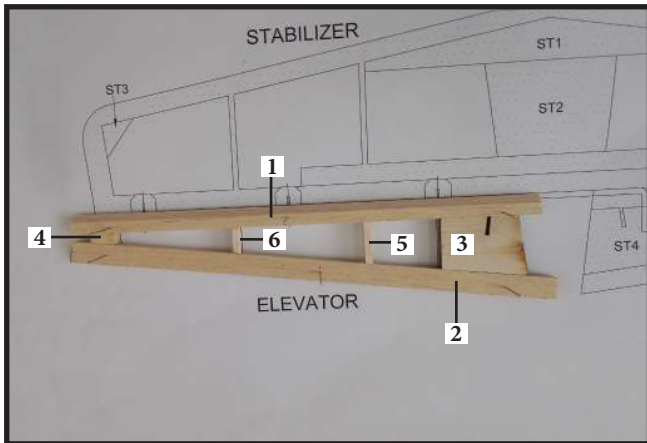
Locate and assemble the Stabilizer as the plan. Step by step do it one after another in order 1-10. Use the nail to plug in keep the rib on the paper plan and add CA glue. (Photo 2).

2.



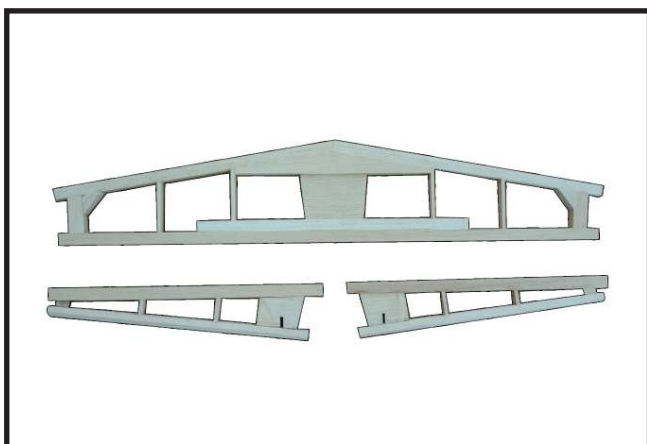
Locate and assemble the Elevator as the plan. Step by step do it one after another in order 1-6. Use the nail to plug in keep the rib on the paper plan and add CA glue. (Photo 3).

3.



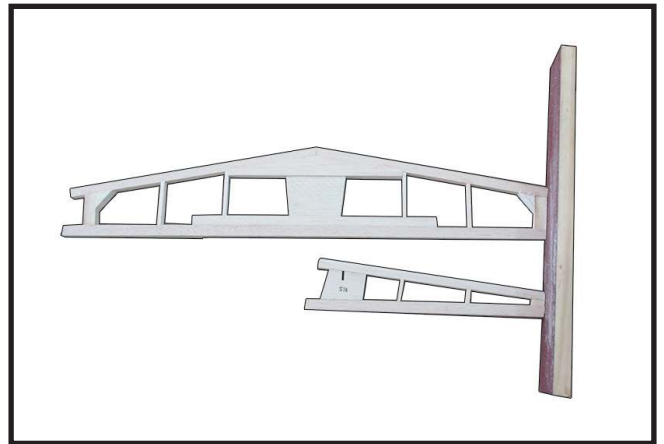
Remove nail Stabilizer and Elevator after glue dries (Photo 4).

4.



Cut off the excess balsa wood part and sanding smooth and flat the edge (Photo 5).

5.



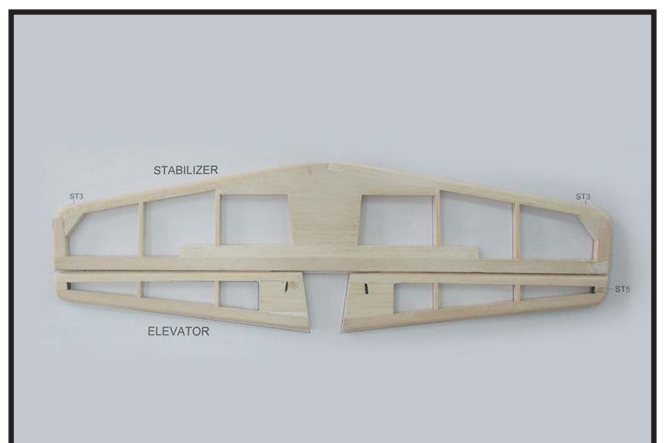
Rounded the edge around of Stabilizer and Elevator by sanding tool (Photo 6).

6.

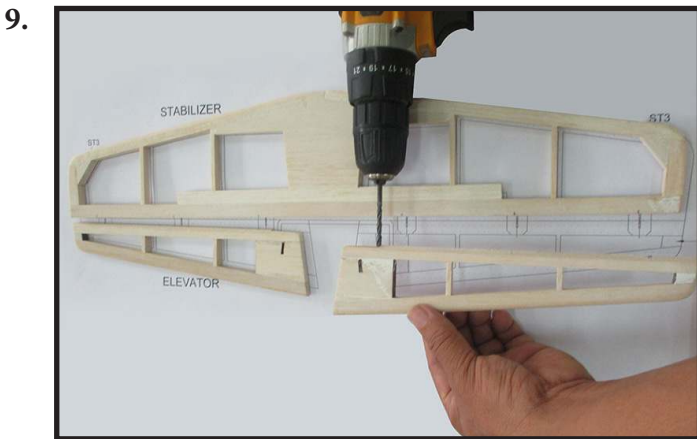
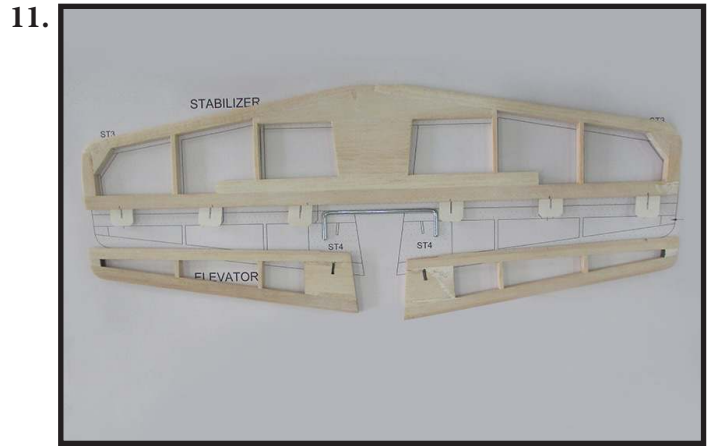
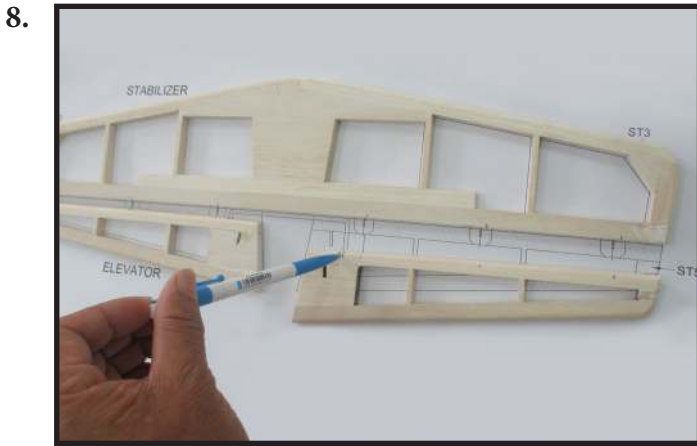


Finish assemble Stabilizer and Elevator (Photo 7).

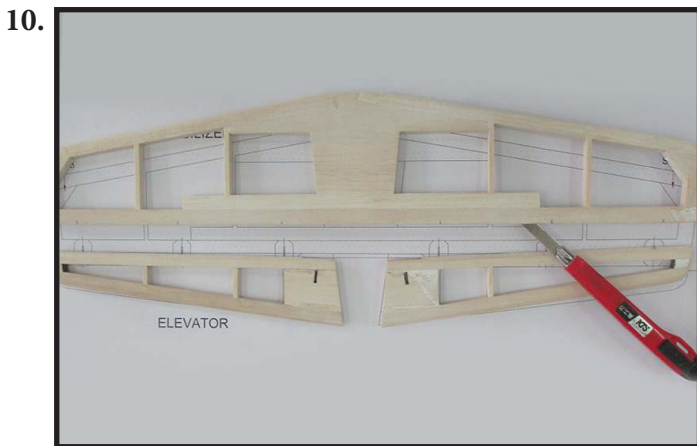
7.



Locate position of metal elevator joiner wire (Photo 8). Then, drill the (\varnothing 3mm) round well inside Elevator. The deep value of well is equal to dimension of the wire part which bends 90 degree angle like a hook. (Photo 9).



Locate position of paper hinge for Stabilizer and Elevator as plan. Then, sawn the slot (for 6 hinges) by the blade tool (Photo 10).



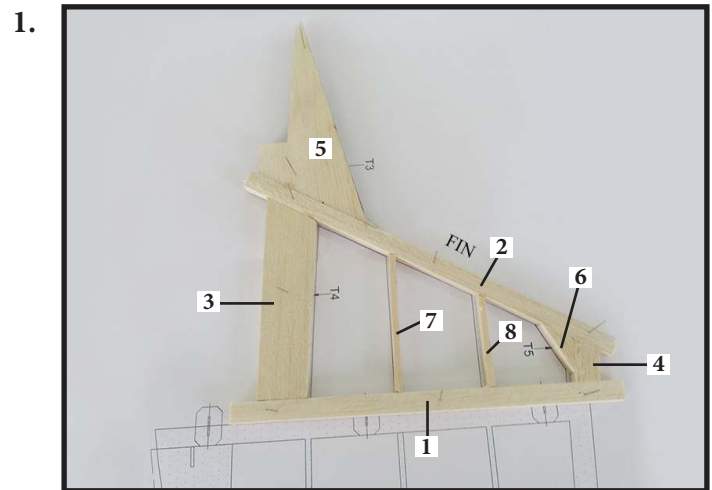
First, assemble 6 paper hinges to Stabilizer. Then, link to Elevator (Photo 11).

FIN AND RUDDER

- Prepare Balsa 8mmx10mm x550mm spars
- Balsa 8mmx12mm x200mm spars
- Balsa 3mmx8mm x100mm spars

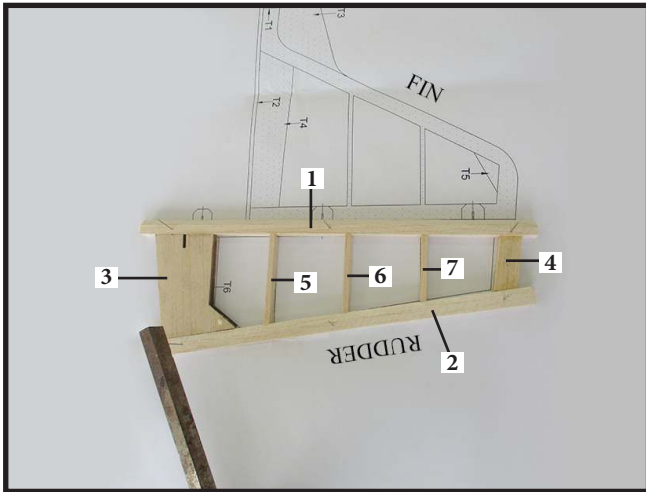
And the laser cut parts are available for assemble the Fin and Rudder.

Locate and assemble the Fin as the plan. Step by step do it one after another in order 1-8. Use the nail to plug in keep the rib on the paper plan and add CA glue. Remove nail after glue dries. (Photo 1).



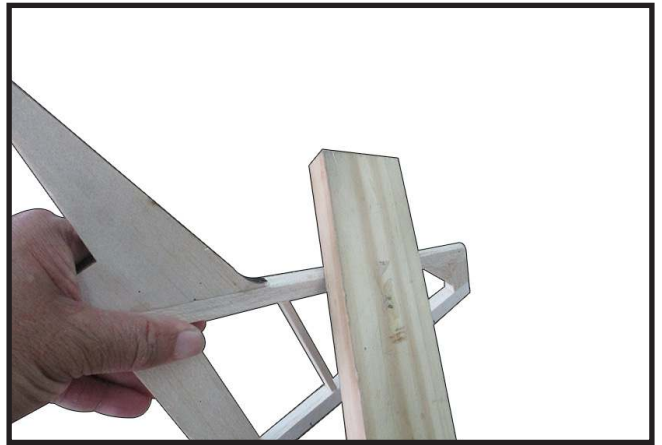
Locate and assemble the Rudder as the plan. Step by step do it one after another in order 1-7. Use the nail to plug in keep the rib on the paper plan and add CA glue. Remove nail after glue dries (Photo 2).

2.



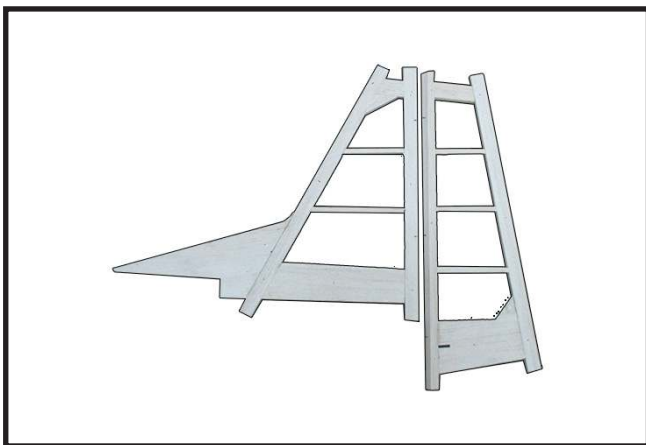
Cut off the excess balsa wood part and sanding smooth and flat the edge. Then, rounded the edge around of Fin and Rudder by sanding tool (Photo 3,4,5).

5.

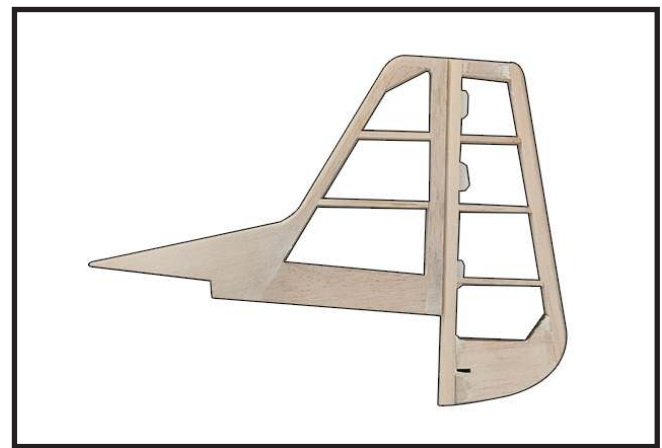


Locate position of paper hinge for Fin and Rudder as plan. Then, sawn the slot (for 3 hinges) by the blade tool. First, assemble 3 paper hinges to Fin. Then, link to Rudder. Finish assemble Fin and Rudder (Photo 6).

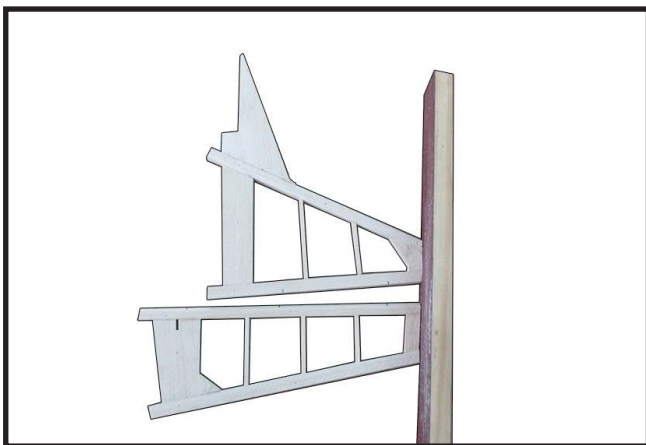
3.



6.



4.

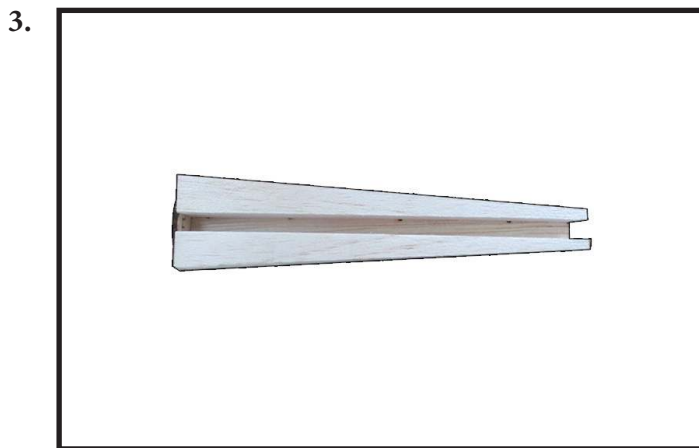
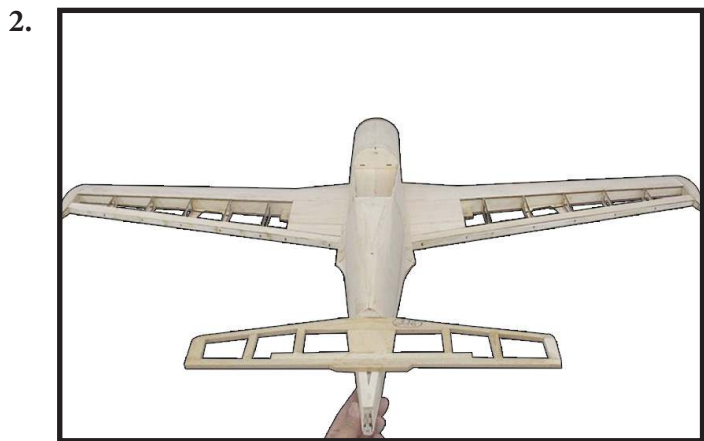


SET UP

Set up the model (Photo 1).

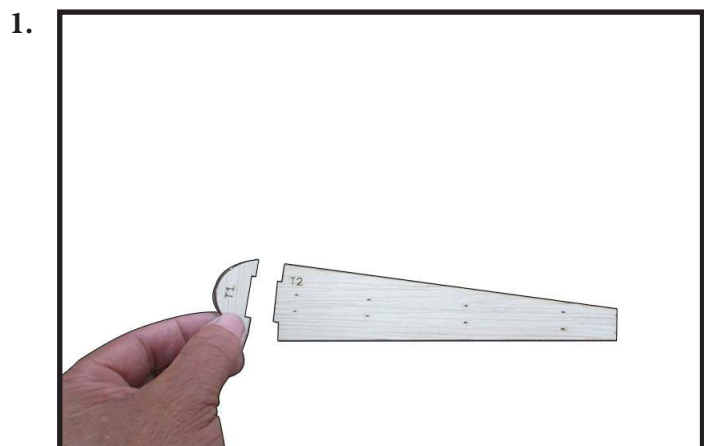
1.



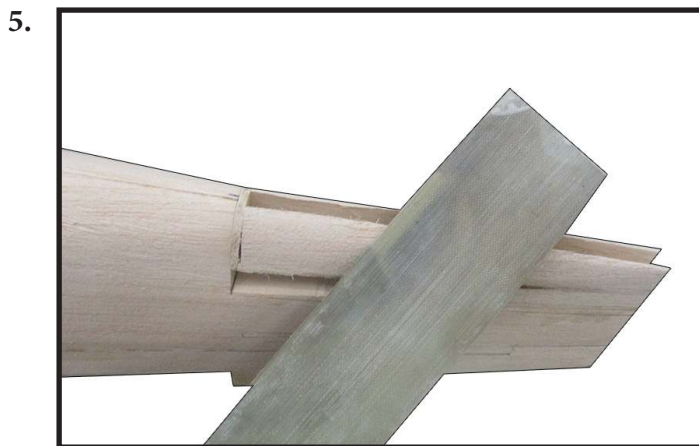
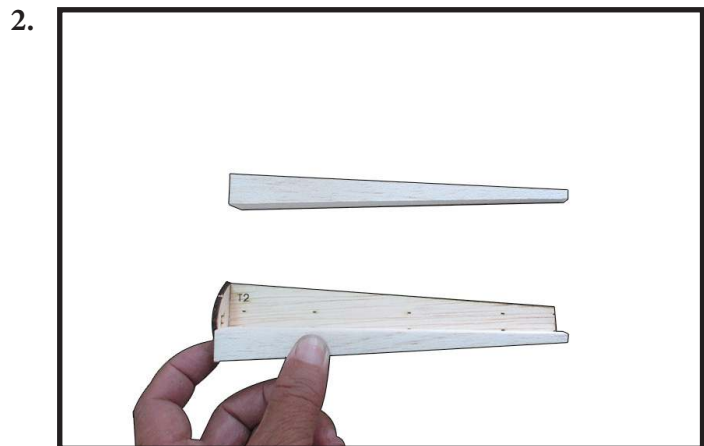


ASSEMBLE THE STABILIZER AREA (THE PLACE FIXED VERTICAL STABILIZER WITH HORIZON STABILIZER)

Assemble T1 and T2 by CA glue (Photo 1).



Assemble the triangle balsa block and cut down the excess part to rounded shape like T1 at intersect place. Then, sanding around it until it look like seamless with the end of fuselage (Photo 2,3,4,5).



BALANCING

- It is critical that your airplane be balanced correctly. Improper balance will cause your plane to lose control and crash. THE CENTER OF GRAVITY IS LOCATED **103-114MM** BACK FROM THE LEADING EDGE OF THE WING AT THE WING ROOT.

- Mount the wing to the fuselage. Using a couple of pieces of masking tape, place them on the bottom side of the wing **103-114mm** back from the leading edge of the wing at the wing root.

- With the model upright, place your fingers on the masking tape and carefully lift the plane.

- Do not turn plane upside down. Only low wing models should be turned upside down for balancing. Remove this paragraph, it is not intended for use in the instructions. it is a note for you. High Wing models must be balanced upright.

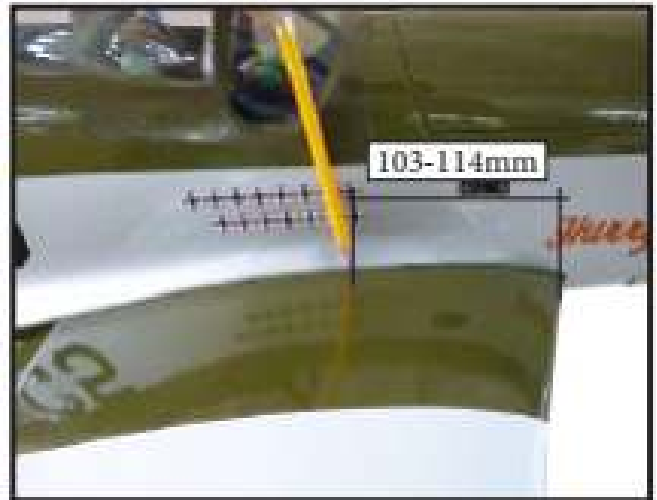
- Accurately mark the balance point on the bottom of the wing on both sides of the fuselage. The balance point is located **103-114mm** back from the leading edge of the wing at the wing root. This is the balance point at which your model should balance for your first flights. Later, you may wish to experiment by shifting the balance up to **10mm** forward or back to change the flight characteristics. Moving the balance forward may improve the smoothness and arrow-like tracking, but it may then require more speed for take off and make it more difficult to slow down for landing. Moving the balance aft makes the model more agile with a lighter and snappier "feel". In any case, please start at the location we recommend.

- With the wing attached to the fuselage, all parts of the model installed (ready to fly), and empty fuel tanks, hold the model at the marked balance point with the stabilizer level..

- Lift the model. If the tail drops when you lift the model is "tail heavy" and you must add weight* to the nose. If the nose drops, it is "nose heavy" and you must add weight* to the tail to balance.

*If possible, first attempt to balance the model by changing the position of the receiver battery and receiver. If you are unable to obtain good balance by doing so, then it will be necessary to add weight to the nose or tail to achieve the proper balance point.

1.



CONTROL THROWS

Ailerons:

High Rate :

Up : 13mm

Down : 10mm

Low Rate :

Up : 10mm

Down : 8mm

Rudder:

High Rate :

Right : 25mm

Left : 25mm

Low Rate :

Right : 20mm

Left : 20mm

Elevator:

High Rate :

Up : 18mm

Down : 18mm

Low Rate :

Up : 14mm

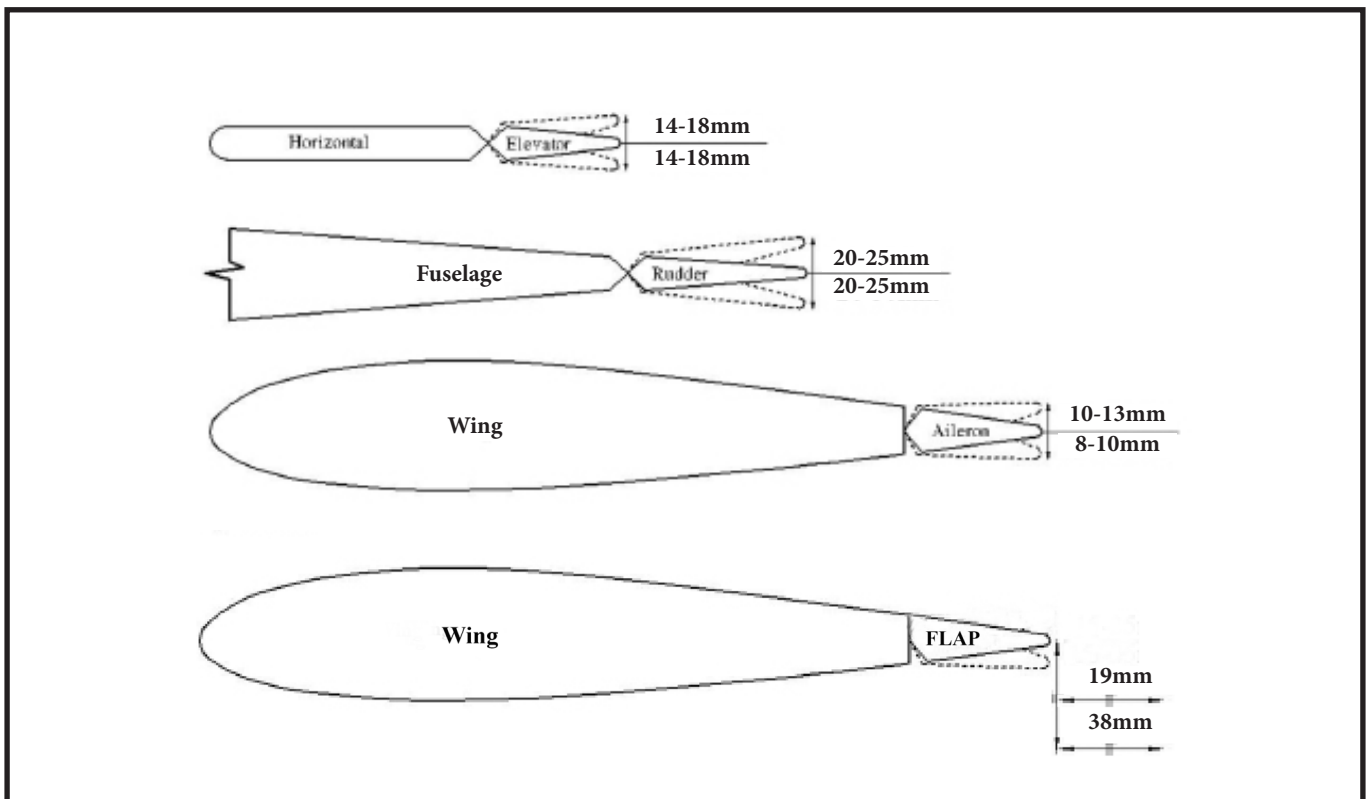
Down : 14mm

Flap:

Mid : 19mm

Full : 38mm

* Hopefully you fun for installing parts.



*If you have any queries, or are interested in our products,
please feel free to contact us*

Factory : 12/101A - Hamlet 4 - Le Van Khuong Street - Dong Thanh Ward -
Hoc Mon District - Ho Chi Minh City - Viet Nam.

Office : 62/8 Ngo Tat To Street - Ward 19 - Binh Thanh District - Ho Chi Minh
City - Viet Nam

Phone : 848 - 86622289 or 848- 36018777

Website : www.SeagullModels.com

Email : Sales@seagullmodels.com

Facebook : www.facebook.com/SeaGullModels.